

Proposals for Union Enhancements

**PRESENTED BY
JUSTIN ETZINE**

**DESIGNS BY
STEFANIE WARNER**

**Statler &
Waldorf**

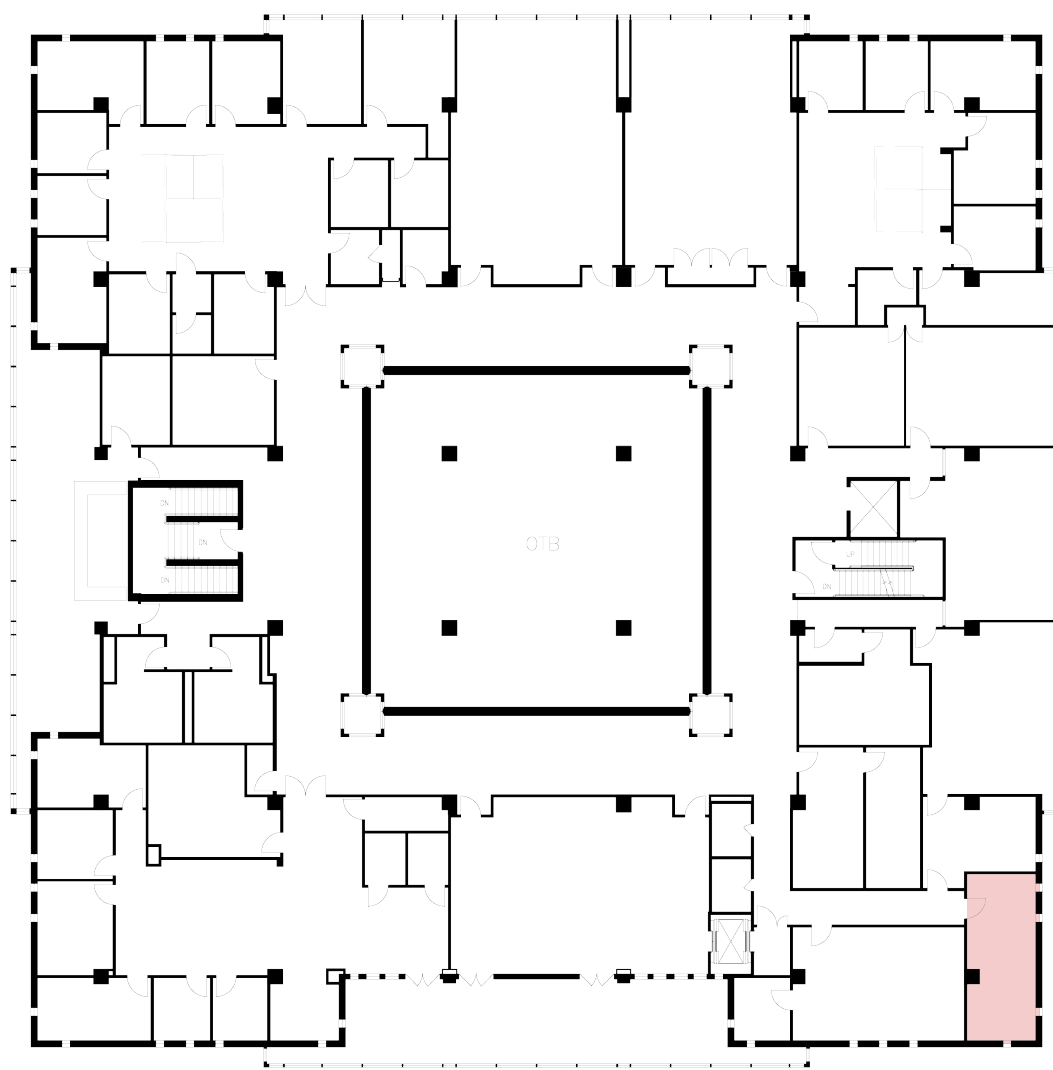


Photo Club

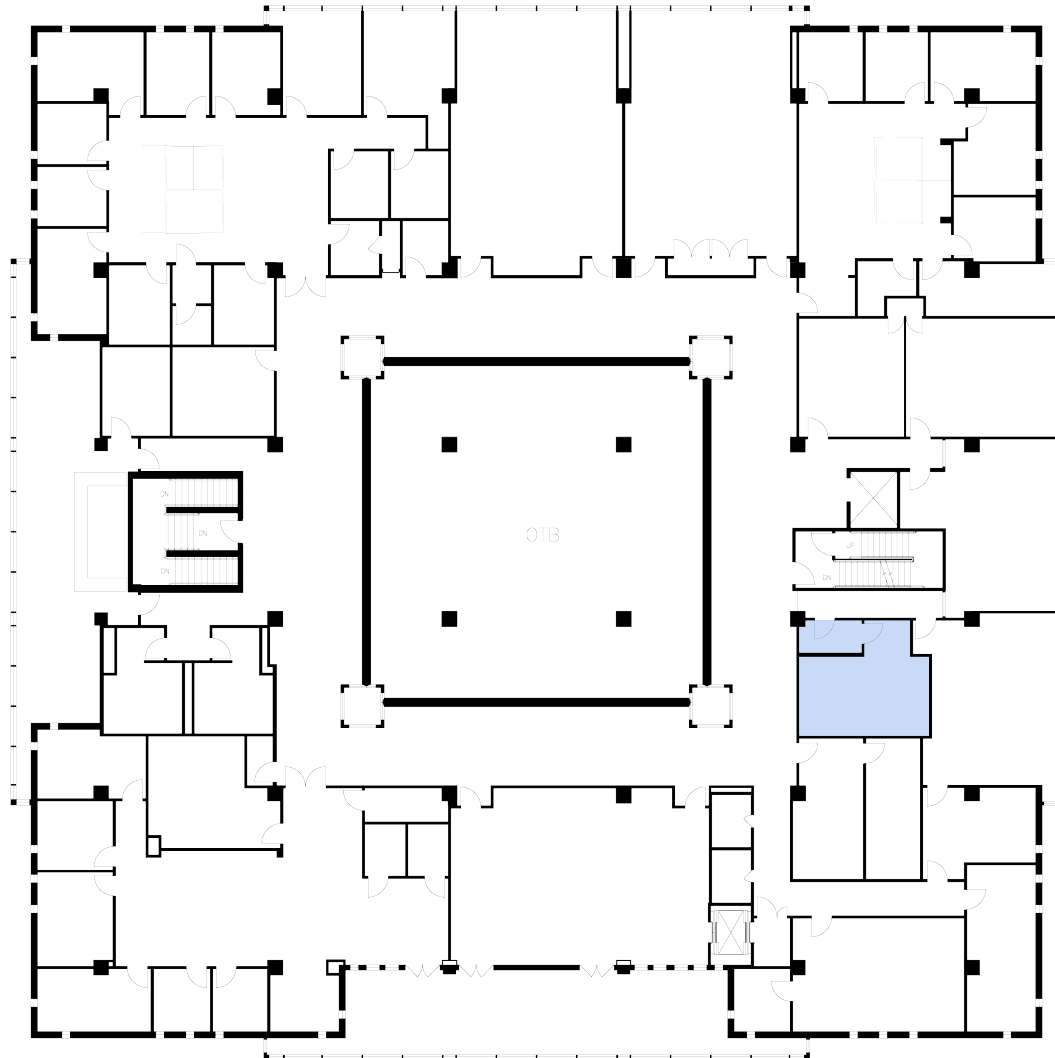
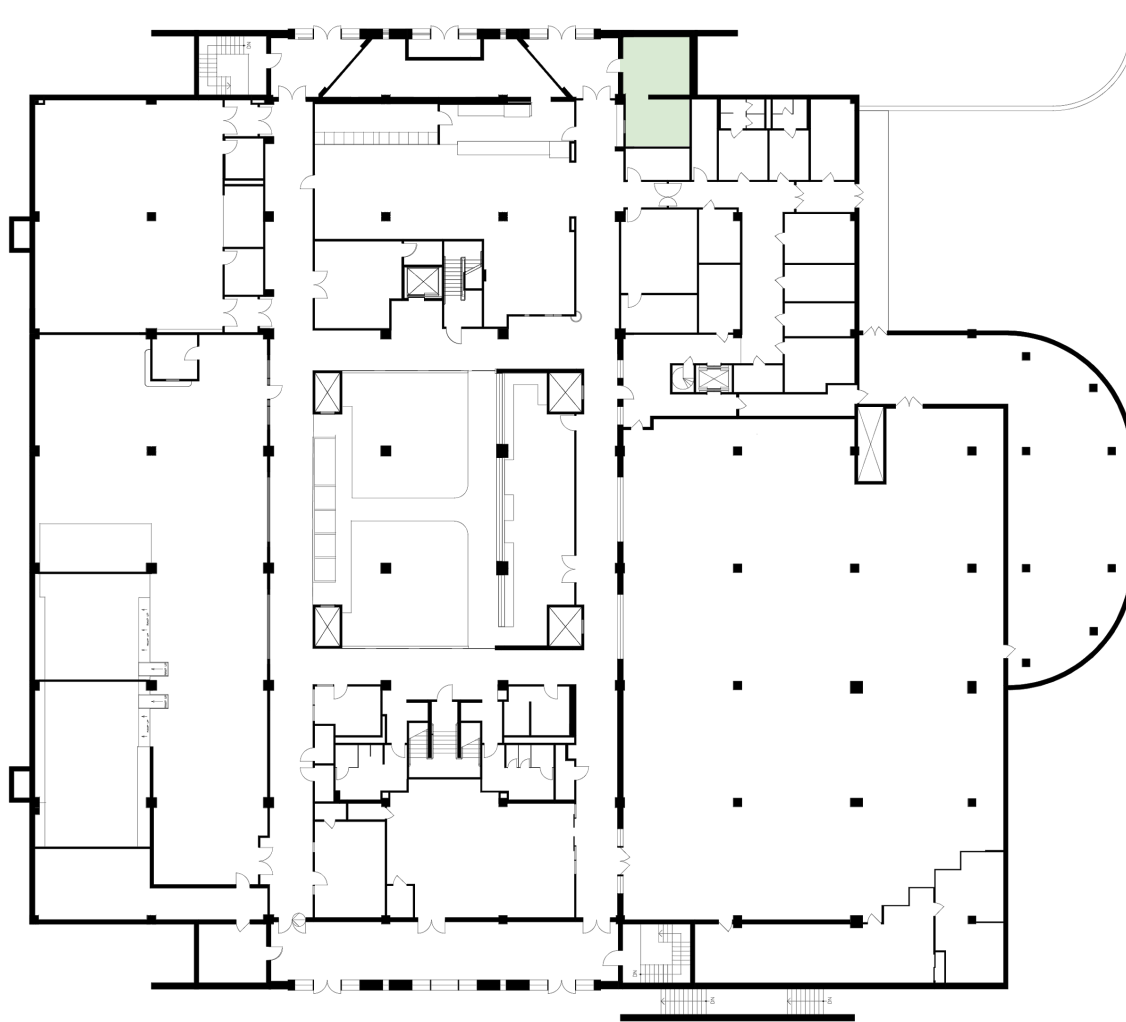
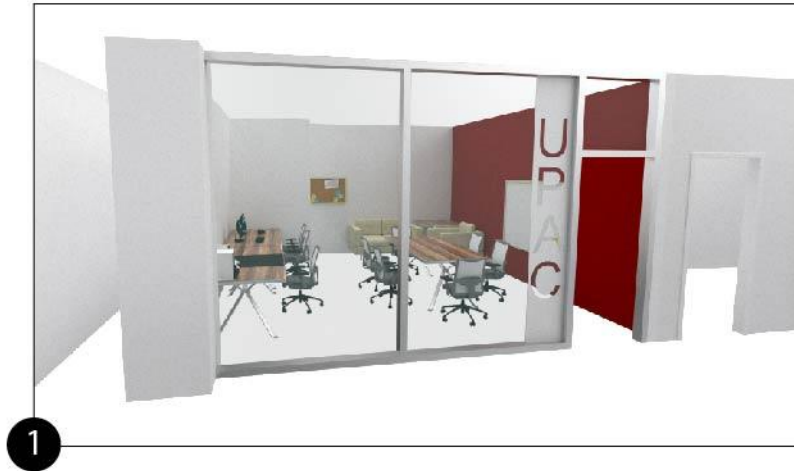
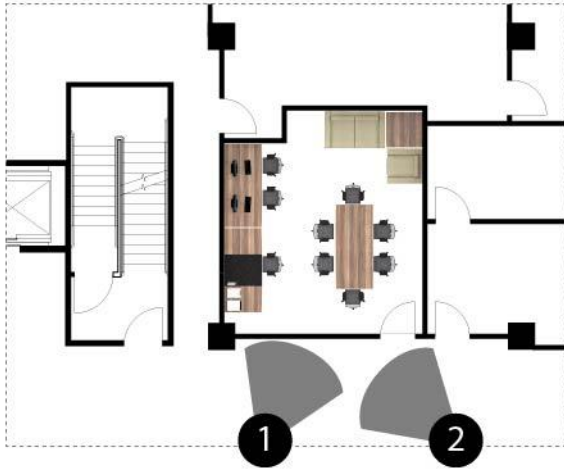


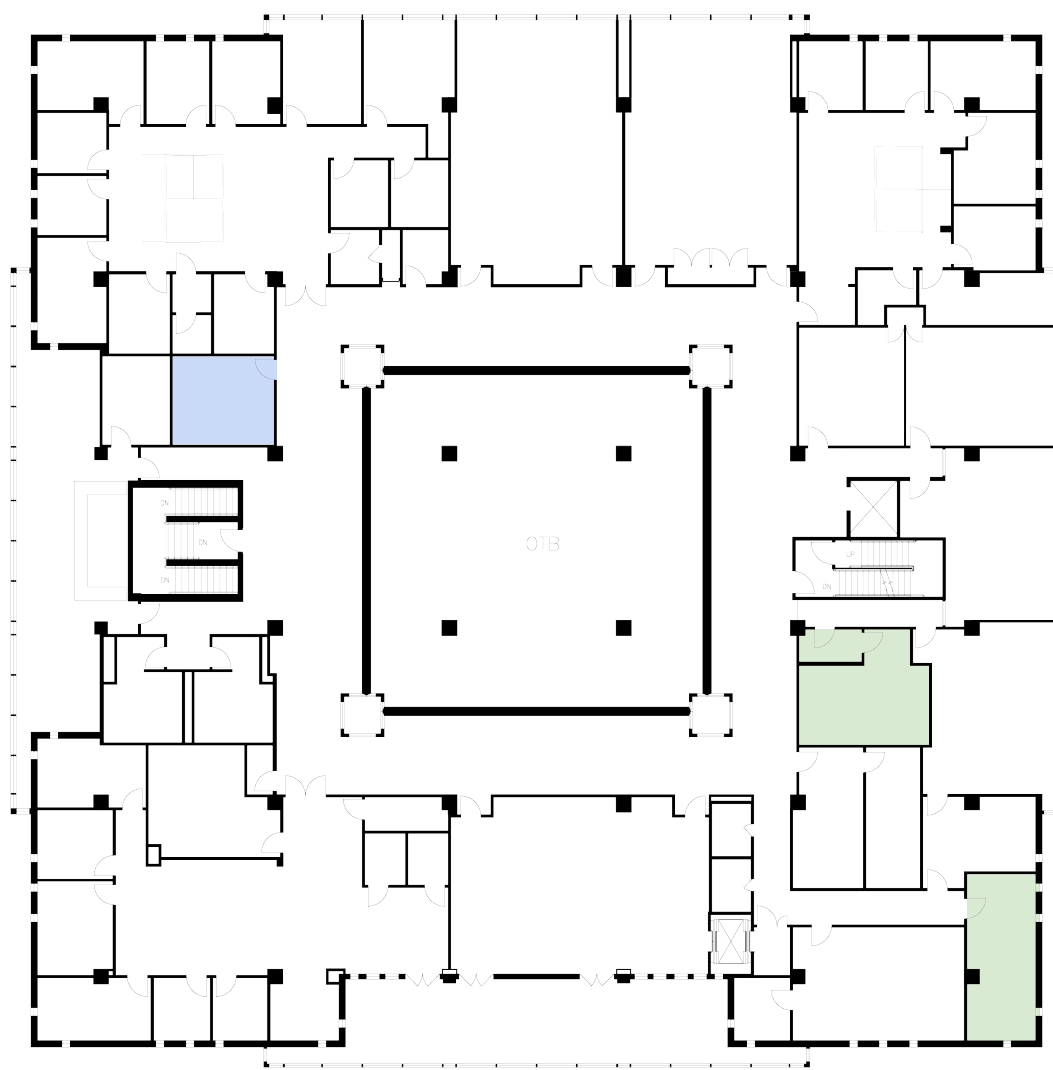
Photo Club



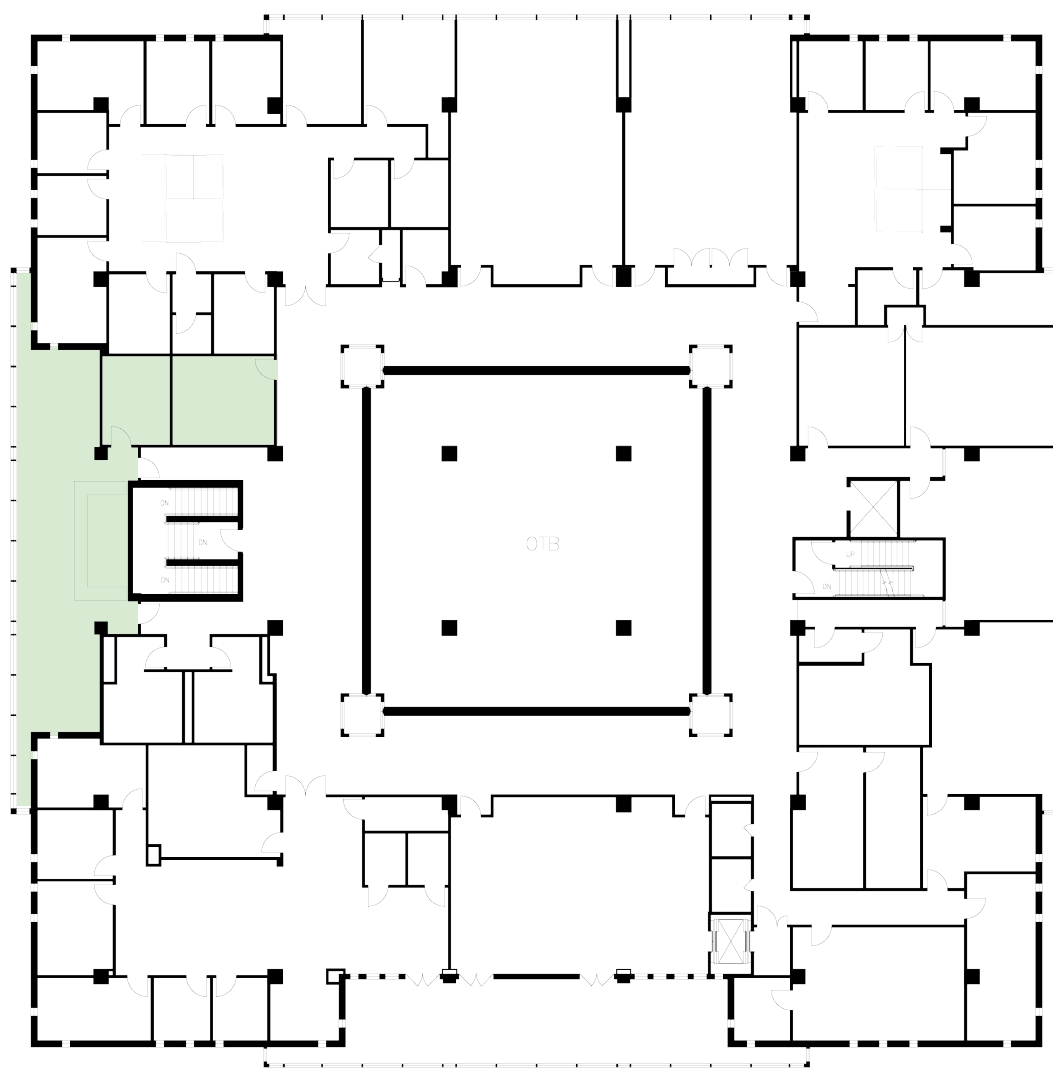


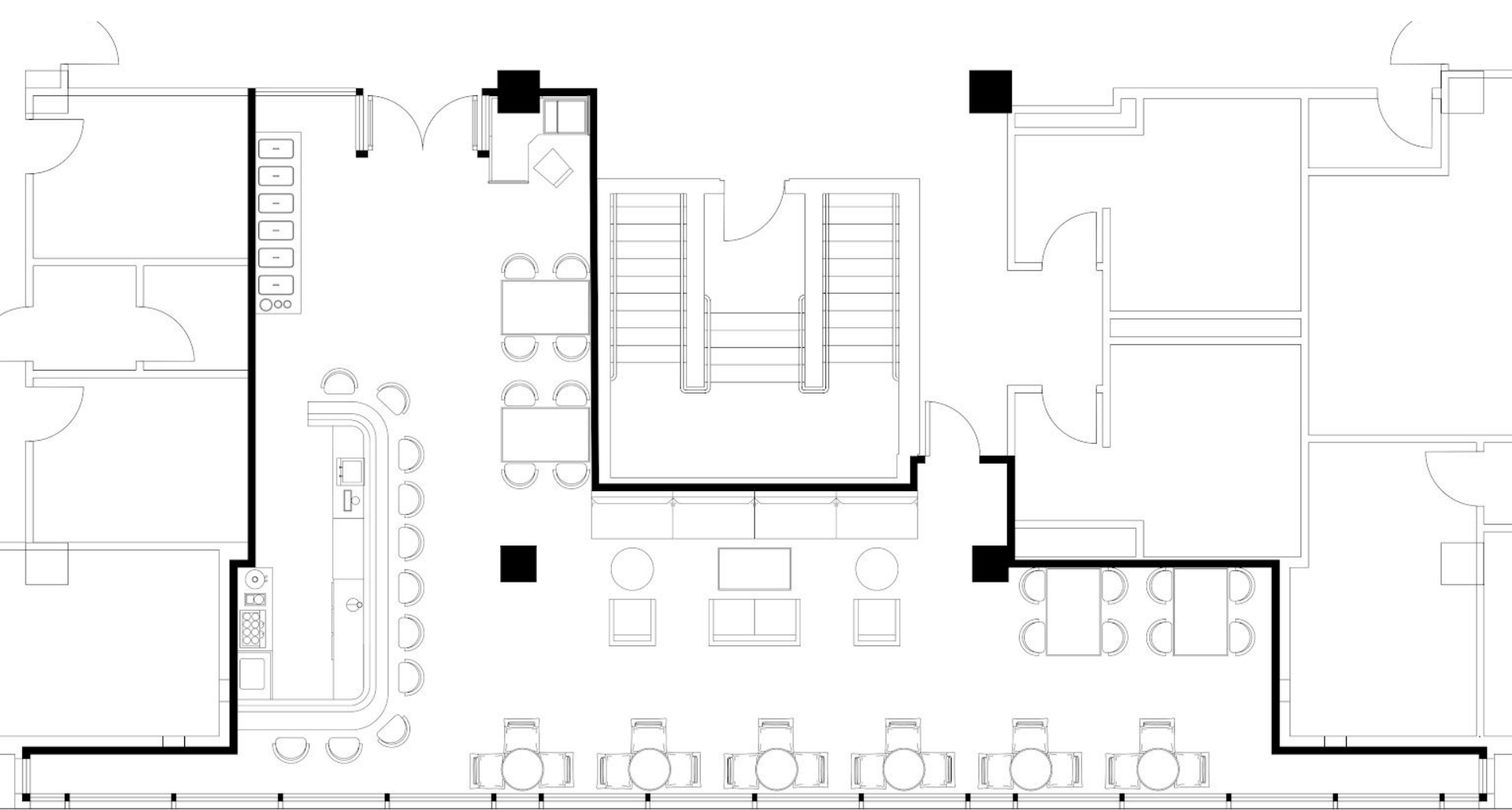
2

**Union Show Techs
& UPAC**



**Clubhouse Pub
Expansion**







IBC: Assembly Group A-2

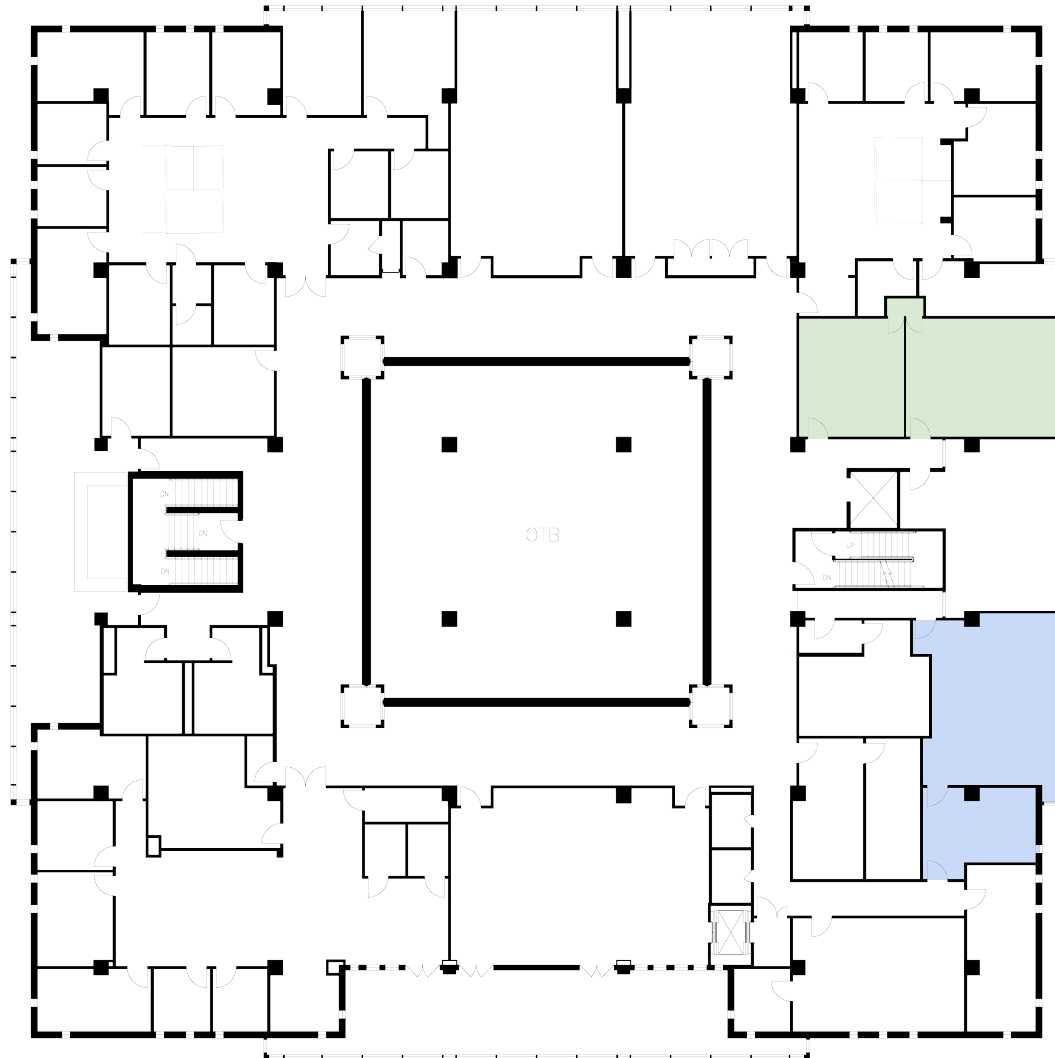
Egress and Fire Safety:

- Exits
 - 0 - 49 → need 1 exit
 - 50 - 500 → need 2 exits
- Occupant Load:
 - 15 sq.ft. per patron in this area
 - Inside bar is excluded from area
- Egress Paths:
 - Bar of this size, safe estimate of 32" egress paths (including doorways)

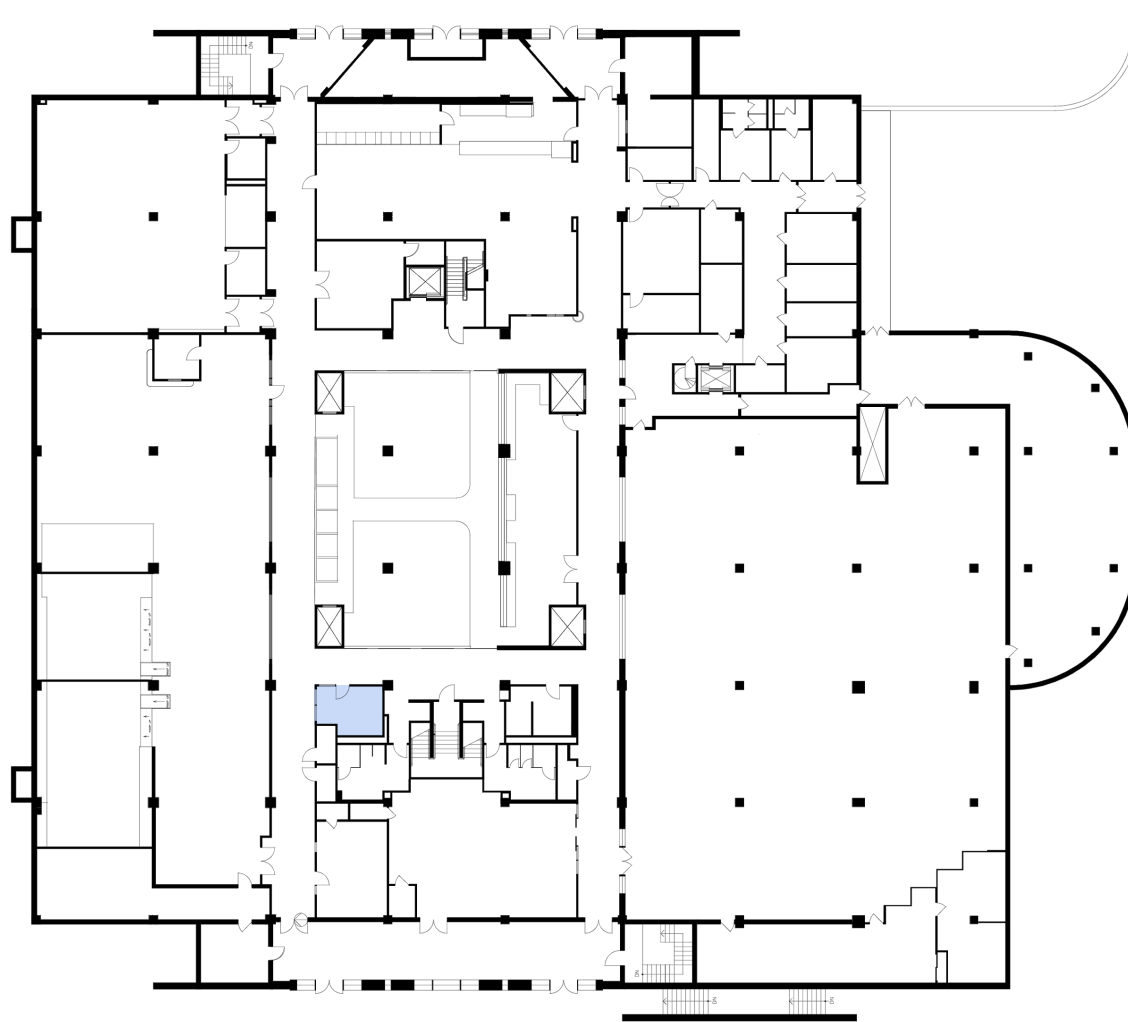
Summary:

- Occupancy **+18** (60 max. to 78 max.)
- Area **+267.97 sq. ft.**
- Ample exits and egress (32" min. → **36.25"**)

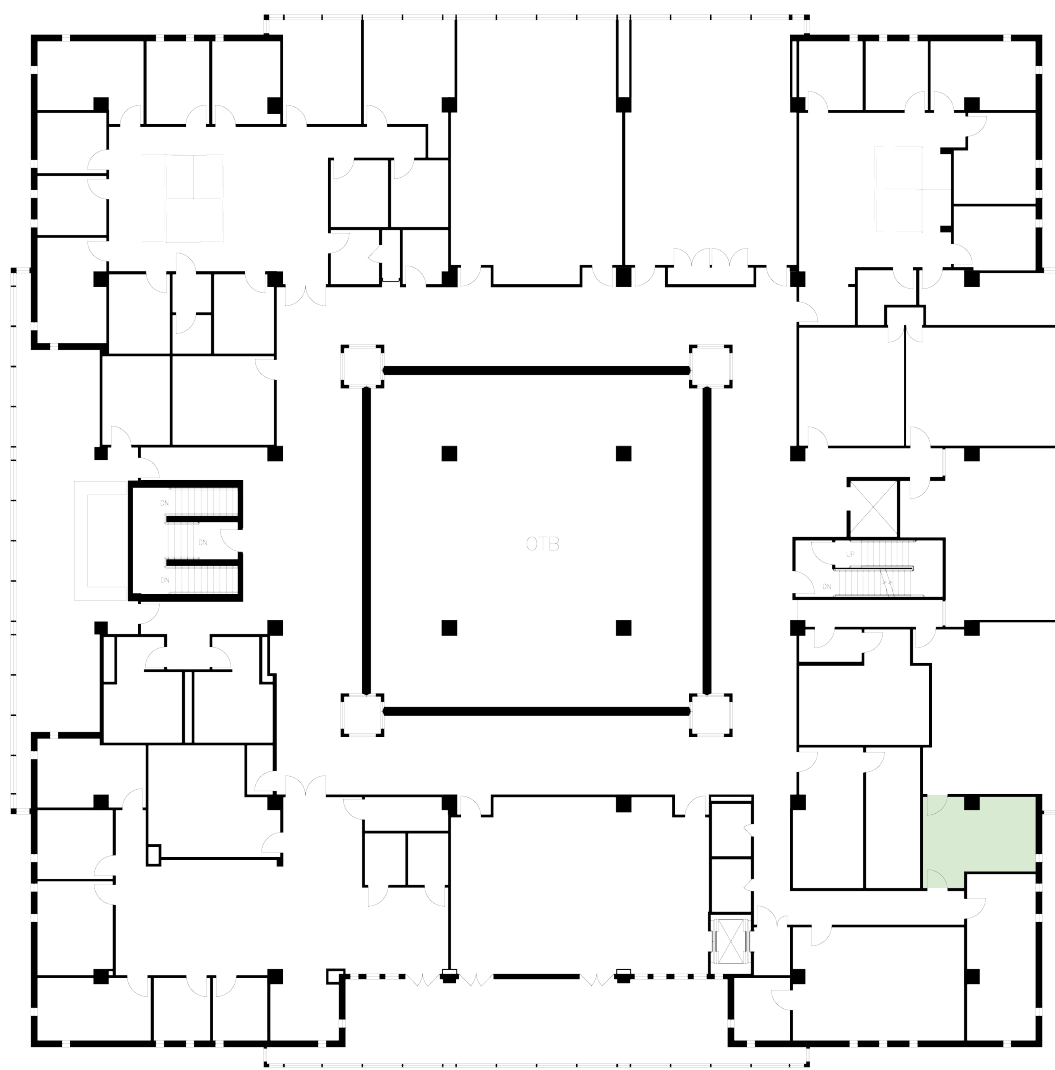
The Polytechnic



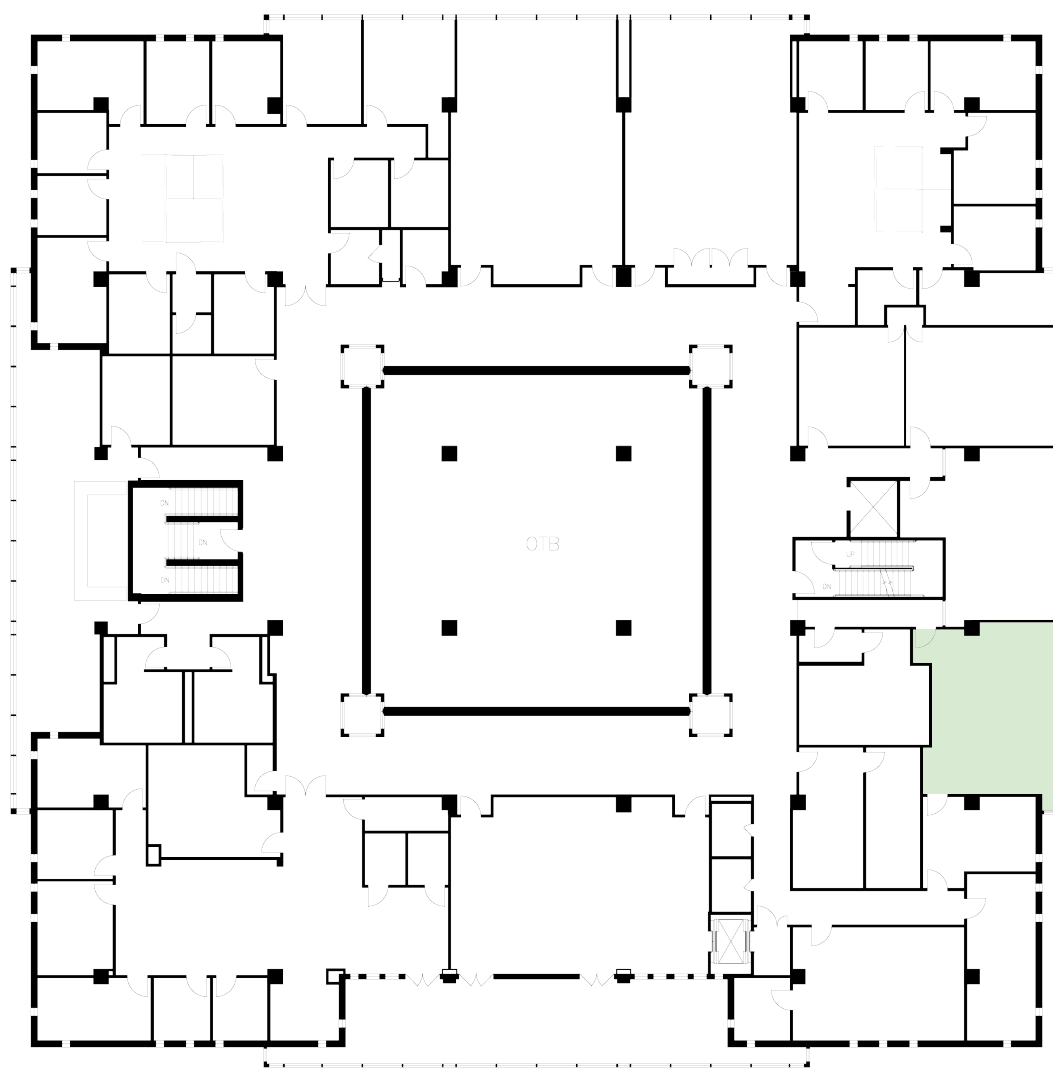
RPI TV



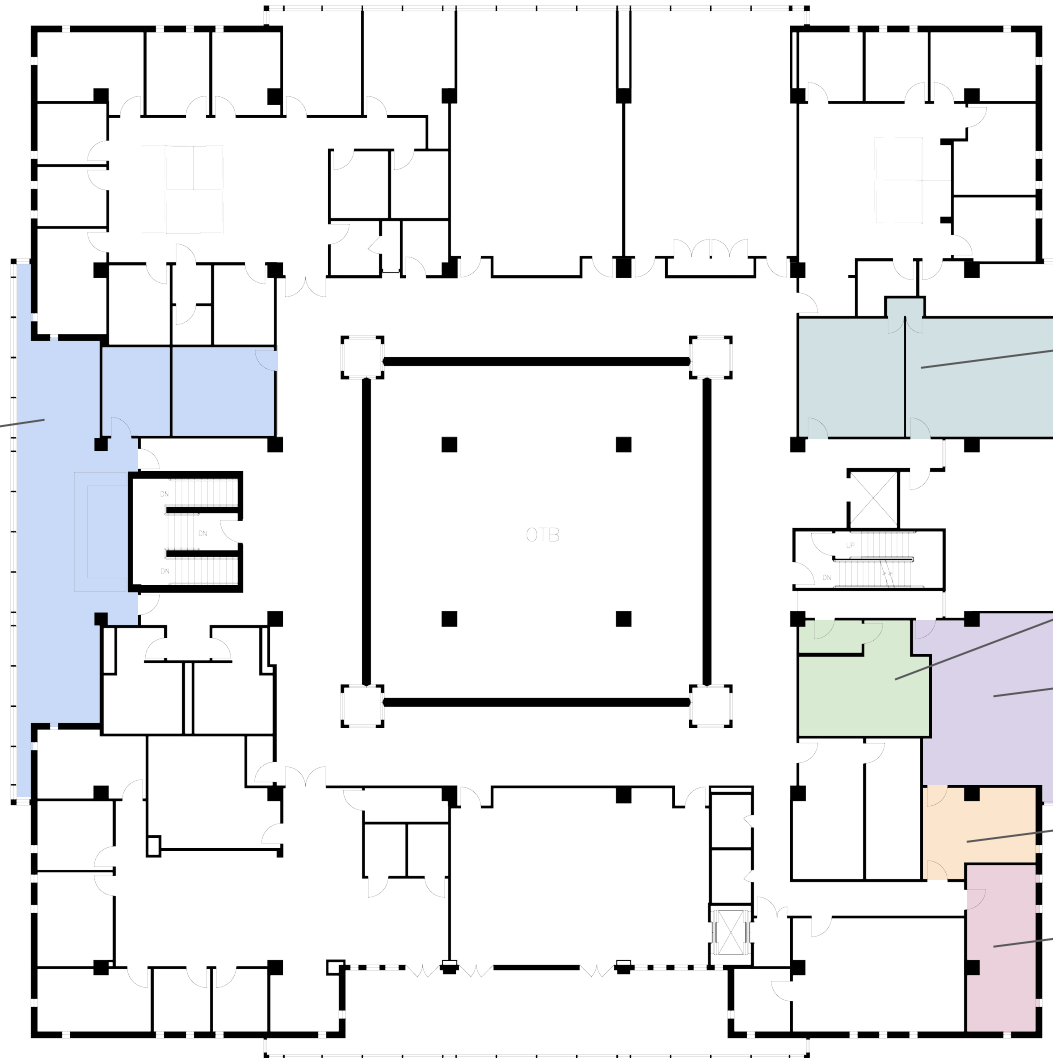
RPI TV



***New Meeting
Room***



Expanded Pub



Poly Office

UPAC

Meeting Room

RPI TV

Union Show Techs

OTB

DN
DN
DN





Photo Club

Ben & Jerry's

Patron Room

Campus Unisex Barbershop