

RENSSELAER UNION

ANNUAL REPORT

FISCAL YEAR 24





The Union Annual Report provides a perspective of the Rensselaer Union over the past year while outlining the student government's budgetary plan for the upcoming year.

FEATURES



Highlights from
the past year



Plans for the
upcoming year



Budgets for the
FY24 fiscal year

CONTENTS

INTRODUCTION

Student Leadership Letter 4

Director of the Union Letter 6

A History of the Union Activity Fee 7

UNION HIGHLIGHTS

A Year in Review 8

Multicultural Programming 10

Summer Arch Programming 11

Graduate Programming 12

Mueller Center Review 13

Staff and Facilities Updates 14

Club Status Updates 15

FY24 BUDGET OVERVIEW

Budgeting Timeline 16

Considerations 17

Class Dues 18

Club Returns 19

INCOME

Sources of Income 20

Letter from Auxiliary Services 22

EXPENSES

Expenses: What Your Fee Funds 24

Expenses by Enrollment Split 25

Expenses by Participation 27

Expense Breakdown Table 28

THE ACTIVITY FEE

Activity Fee Recommendation 30

APPENDICES

A. Activity Fee Full Calculation 32

B. Club Classifications 34

C. Union Administration Org Chart 36

D. Student Government Org Chart 37

E. Historical Activity Fee Data 38

F. General Club Subsidies 39

G. Service Club Subsidies 41

H. Administrative Subsidies 42

I. Union Reserves Account Breakdown 43

INTRODUCTION

STUDENT LEADERSHIP LETTER



Welcome to the Union Annual Report for FY24!

The Union is central to student life at RPI. Whether you're joining a club, enjoying pad thai from Thunder Mountain Curry, or grabbing a drink with friends at the Pub, the Union is the place to be at RPI. The Union provides facilities, resources, and a collective to support students and student leaders.

The Union Annual Report

The Rensselaer Union is run by students, for students. That is why every year, the Student Senate and Executive Board work diligently to prepare the Union Annual Report, known as the UAR. The UAR serves two purposes. Firstly, the UAR reviews how your activity fee money was spent last fiscal year, FY23, which runs from July 1st, 2022 to June 30th, 2023. The UAR covers highlights from a variety of aspects of the Union, including multicultural leadership, graduate programming, and the Mueller Center. All of the programs discussed in this report are paid directly by the activity fee. Since this report is created in November and December 2022, this report doesn't even cover half of what your fee funded for FY23!

Secondly, the UAR serves as a budget justification for the next fiscal year, FY24, which runs from July 1st 2023 to June 30th, 2024. The Executive Board is charged with all budgetary matters of the Union, from funding your favorite club, to keeping the lights on and paying the professional staff. The Student Senate, as a check on the Executive Board's budgeting powers, chooses the total amount that each graduate and undergraduate student pays. The UAR outlines to the Student Senate where the Executive Board has

opted to allocate resources, and the recommended activity fee amount based on their budgeting process. This also serves as a budgetary justification for the student body when the budget becomes public, so that all students know where their dollars are being spent.

Shared Governance This Year

The UAR is a proof of student-run governance in our Union, but it is also proof of shared governance at RPI. Shared governance has two benchmarks—responsibility and accountability—with one critical methodology—broad and unending communication. Students are regularly included in providing solutions for the hot-button issues of our student experience, like the Handbook for Student Rights and Responsibilities and the Summer Arch. The Student Senate has also provided feedback to the high-level performance planning for divisions that affect student life the most.

We have also seen more regular communication between the Grand Marshal (GM) and the President of the Union (PU) with the 19th President of the Institute, Marty Schmidt. This includes collaboration on events and proposing solutions to gather student feedback. Finally, the GM and PU have had our permanent guest membership reinstated to the Board of Trustees Student Life Committee. Our position on this committee will allow students to provide direct feedback on the high-level direction from RPI's Board of Trustees.

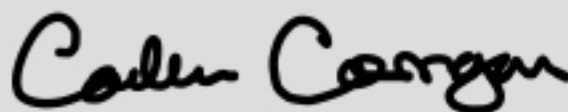
Moving "Rensselaer Forward"

As we move into FY24 and beyond, we are looking forward to how shared governance will evolve. As your student leaders, we are ever confident in the power of our student collective to be the change we want to see on campus.

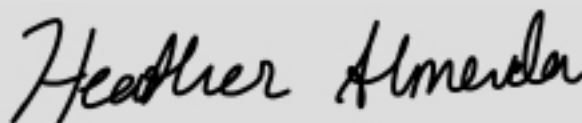
Yours in Union,



CAIT BENNETT '22 '23G
156TH GRAND MARSHAL



COLLEEN CORRIGAN '21 '23G
133RD PRESIDENT OF THE UNION



HEATHER ALMEIDA '23
UNION ANNUAL REPORT
COMMITTEE CHAIRPERSON

INTRODUCTION

DIRECTOR OF THE UNION LETTER

Dear Members of the Union,

Throughout the 2021-22 school year, our Student Union has continued to serve thousands of students daily. Thanks to our Executive Board and its many dedicated and effective student leaders, we have advanced the Union in a number of ways.

- We have expanded the Pub and significantly remodeled the Student Government Suite.
- We have created new offices for Wellness and Outdoor Programs on the main floor of Mueller Center to give students easier visibility and access to those programs. This has allowed us to increase programs in both areas.
- It is also helping us to develop a campus-wide partnership with Student Health and Counseling and other clubs and departments to support student well-being.
- We are very excited to welcome three new Assistant Directors in Student Activities: William O'Brien, Howie Lien, and Jayne Godette. They have done a wonderful job of supporting student clubs and their officers.
- We have also welcomed a new Bookstore Manager and her name is Victoria Viskovich.

We are very proud of the many successes that our student-staff partnership has accomplished over the past year. We excitedly look forward to continuing our exciting journey together.



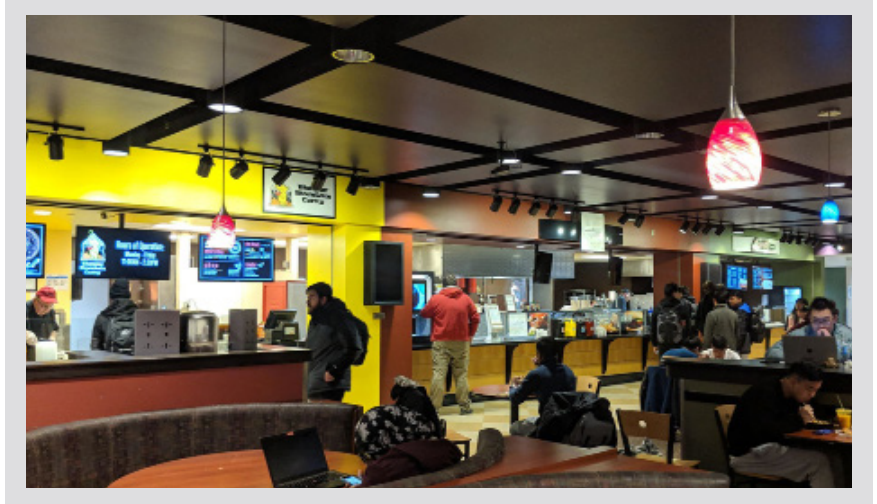
A handwritten signature in black ink that reads "Charlie Potts". The signature is written in a cursive, flowing style.

DR. CHARLIE POTTS
DIRECTOR OF THE UNION

INTRODUCTION

HISTORY OF THE ACTIVITY FEE

The precursor to the Student Activity Fee developed in 1883, when students saw the need for a gymnasium. They pledged nearly \$1,300—which, in 2018, would be approximately \$35,000 — to fund what would be inaugurated in 1921 as the '87 Gym. According to Rensselaer historian Sam Rezneck, the '87 Gym “became Rensselaer’s first concession to non-academic student needs, achieved largely on the initiative of the students themselves.”



Furthermore, “early efforts to develop and improve athletics led, in fact, to the beginnings of what might be called student self-government, since the Institute authorities were not greatly or directly concerned.” Formed in 1890, the Union aimed “to provide, as it were, a comprehensive organization for all students, supported in time by assessments imposed as a compulsory supplement to tuition.”

In the late 1950s and early 1960s, students believed their Union had outgrown its original home in “the clubhouse”, a building now known as Lally Hall, thus they saw a need to find a new, larger space to house the Union. After determining that the development of a new building would not occur without student funding, a decision was reached to tax themselves to pay for the construction of the current Union building, starting what we now call the Union Activity Fee. The student body approved, by referendum, the payment for the building, which was subsequently paid off over 30 years in annual debt service payments with the last payment made in 1994. The students contributed \$300,000 (in 2018 that would be approximately \$3,000,000) before construction ever began.

The Student Senate adopted the current determination process of the Activity Fee in March of 1985. Rather than unilaterally imposing fees at the same level to undergraduate and graduate students, the Senate decided to fairly compute what students should pay as their Activity Fee by assessing charges for the services and activities available.

In 1999, a \$10 million construction project revitalized the Union once again. The 18-month project was approved with student input and a referendum. Beginning with the Fiscal Year 2001 budget, the students began making debt service payments of \$289,000 annually for seven years, and of \$259,000 annually for the 18 subsequent years. At the same time, the Union partnered with the Institute to develop the Mueller Center, subsidizing its operating costs to meet student demand for a state-of-the-art fitness facility. Student initiative has enabled the development of the Union to its present state today.

UNION HIGHLIGHTS

THE YEAR IN REVIEW

March 2022

- GM Week Elections were held with a Sweet Treats theme. Cait Bennett was re-elected as Grand Marshal and Colleen Corrigan was elected as President of the Union.
- The UPAC Winter Carnival committee held a unifying carnival during GM Week Elections with games, food, and prizes.

April 2022

- The RPI Players brought the RPI community "Into the Woods" with them as they performed their Spring Musical.
- The Student Dessert Social was hosted on the Union Patio to celebrate Dr. Shirley Ann Jackson's retirement.

May 2022

- The Rensselaer Symphonic Band fills Mother's with the beautiful harmonies in their Spring Concert.
- Formula Hybrid attended and competed at the Formula Hybrid competition focused on hybrid vehicle technology.

June 2022

- Pride Month at the Union kicks off with Pride Fest and Dress to Show Support for the LGBTQ+ community.
- Talk without Borders held a Juneteenth event to offer a space for students to discuss their experiences and feelings.

July 2022

- The Rensselaer Union Classical Concert Series sponsored tickets to the New York City Ballet: 20th Century Masters

August 2022

- The Mueller Center restarted their program to host therapy dogs to support students as they enter Arch finals.





- The semester kicked off with Union After Dark, where freshmen explored escape rooms, voted for their favorite mascot, and were formally welcomed into the Union.

September 2022

- New Grad Meet & Greet was an indoor event organized in the Mueller Center. Newly accepted graduate students enjoyed Snowman ice cream, root beer floats, puzzles, and lawn games.
- The Graduate Council hosts their first Board Game Social at the Union Clubhouse Pub, complete with pizza and camaraderie.



October 2022

- Alpha Phi Omega service fraternity organizes students to help the RPI and Troy community during their annual Service Day.
- Marty Schmidt is inaugurated as RPI's 19th President, and community celebrated with an afternoon-long block party complete with food trucks and music.



November 2022

- The traditional Mr. RPI pageant was hosted by Bwenzi with support from the RPI Class of 2024. Mr. RPI Club Rugby was awarded the title of Mr. RPI.
- The Undergraduate Council encouraged the creative side of the RPI undergraduates with their Pottery Painting Event.

December 2022

- African Student Association hosts African Night, a night of connecting with African culture through entertainment and food.
- Rensselaer Pride Association annual Drag Ball fills the McNeil room with fashion, music, and fun.



UNION HIGHLIGHTS

MULTICULTURAL PROGRAMMING

Highlights in Multicultural Programs

March 2022

- Black Student Association Ebony Ball

April 2022

- Indian Student Association Holi Festival
- Korean Student Association Sports Day
- Philippine American League Bayanihan
- Multicultural Leadership Council Destress Study Break

June 2022

- Talk Without Borders Juneteenth Event
- Pride Month at the Union Events



Multicultural Programming is an essential part of the Union, highlighting important cultural hallmarks in our community. Despite changing pandemic restrictions, the Union continued to thrive in conducting exceptional multicultural programs with the addition of Jayne Godette, one of the Union's Assistant Directors of Student Activities in January.

Amid social distancing, the ability to have multicultural programming occur was vital in continuing to enhance the RPI campus experience. With the dual option of both in person and virtual, the Union has remained a source for multicultural dialogue events including Talk Without Borders, which encourages underrepresented students to speak freely and emphasizes community belonging both on and off campus.

Additionally, Round Table is an event hosted by the Multicultural Leadership Council of the Rensselaer Union Executive Board. Round Table aims to bring student leaders of all multicultural organizations at Rensselaer together to discuss events, campus issues, and advance diversity and equity initiatives.

With the increasing need for quality social interaction, multicultural clubs began with resuming in-person programming with fewer than 100 participants at each event for the school year. Signature events that occurred included Chinese American Student Association's Chinese New Year, Black Student Alliance's Ebony Ball, and Philippine American League's Bayanihan.

UNION HIGHLIGHTS SUMMER ARCH PROGRAMMING



While Summer 2022 events were still following the COVID-19 policies, there were many programs held throughout the summer. The Student Life staff worked together to present events on Wednesdays in a program called Center Of Gravity. The Union and Mueller Center did two programs for the Center, including a 518 donut break in June and therapy dogs in August to help students de-stress from finals.

For the first time, the Union and Mueller Center created a Pride Month Program for June. There were 6 main events to celebrate and recognize our LGBTQ community. Pride Month was kicked off with Pride Fest at the Union, and Dress to Show Support for LGBTQ+ community. The Union also provided buses to the Albany Pride Parade in mid-June. Mueller Center held Pride Yoga and the Rainbow Run/Walk on the '86 Field. The final event was a Pride collaboration Stress Relieve Day.

The Center for Wellness held 6 programs over the summer, including the Summer Refresh series that involved nutrition programming with Rensselaer dining. Additionally, Stress Relief Days were held at the Mueller Center. The Clubhouse Pub held All Ages Trivia Tournament every Friday from May 27th to August 12th.

The Rensselaer Union Classical Concert Series sponsored tickets and a bus to 3 Saratoga Performing Arts events, including the Freihofer's Jazz Festival, the New York City Ballet: 20th Century Masters, and the Philadelphia Orchestra: Harry Potter and the Prisoner of Azkaban.

UNION HIGHLIGHTS

GRADUATE PROGRAMMING

The graduate student population at Rensselaer differs in many ways from their undergraduate peers, including in their interests and needs with regard to events and clubs. Accordingly, the Union offers several programs and resources that help fill graduate student needs, including Clubhouse Pub events, Graduate Student Council events, and graduate-student-oriented clubs and student organizations. As the campus community shifted back to fully in-person operations, the Union transitioned its graduate student programming accordingly. While spring 2022 saw continued remote offerings, the summer and fall 2022 saw a transition to in-person events.

Graduate Council

The graduate student council began the year by continuing the pandemic-inspired “Grad Hour” events, a weekly series of remote events covering topics ranging from professional and academic development to mental health and student support and social events. With the return to in-person club operations in the fall, the Council hosted several in-person events including a traditional Open House to welcome new students and a Halloween Party. Finally, the Graduate Council began a series of collaborative events with a variety of graduate-led organizations.

The Clubhouse Pub

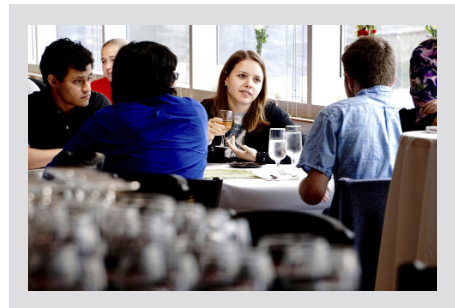
The Clubhouse Pub provides a safe, restful location for graduate students on the RPI campus in the Rensselaer Union. The Graduate Council planned events for graduate students in The Clubhouse Pub this year. The first ever Grad Student Board Game Night was a great success. The Pub's Wine & Dine events and Painting at the Pub continue to be popular with graduate students.

Student Organizations

The Union continued to recognize and support the array of clubs that serve graduate students, including the Graduate Outdoor Recreation Program (GORP), the Black Graduate Students Association (BGSA), and a swathe of professional organizations such as the graduate branch of the Society of Women Engineers (SWE) operating on campus. The union provides invaluable help advertising, organizing, and managing the organization so they may help graduate students with their missions.

UNION HIGHLIGHTS

MUELLER CENTER REVIEW



The Mueller Center is dedicated to supporting the holistic health and wellness of all students. This year, the Mueller Center hired a new Assistant Strength and Conditioning Coach for the Mueller Center to assist the general student population and clubs. The Mueller Center added two new offices for Wellness and Outdoor Programs to their building, allowing for new programming to be created. Outdoor Programs piloted a successful overnight experience for Navigating Rensselaer and Beyond, and additionally piloted the Therapeutic Adventure Program, which is an alternative mental health resource in conjunction with the Health and Counseling Centers.

Wellness Programs hosted the 4th annual Fresh Check Day in February with the largest turn out to date. The Wellness Programs in collaboration with other campus departments spearheaded the first annual Pride Month June 2022. Therapy Dogs were approved to return to campus as part of our signature wellness program in August 2022.

The Mueller Center is the home to all club and intramural sports, which had a resurgence following the COVID-19 pandemic. The Ballroom Dance Club hosted their annual home competition for the first time since 2020 (Albany Elk's Lodge). This year saw over 3,000 participants in over 20 intramural sports, as well as over 1,500 participants in over 54 club sports. Of the club teams, 18 qualified for post-season tournaments, and 8 of those teams made it to Nationals – congratulations to our Quad Ball, Wrestling, Spikeball, Table Tennis, Curling, Cycling, Equestrian and Volleyball. Additional congratulations to the Running Club's Roman Silen, who ran the 2022 Boston Marathon with a finish time of 2:59:47. Two new club sports were added this year, Disk Golf and Figure Skating.

UNION HIGHLIGHTS

STAFF AND FACILITIES UPDATES

Staff Updates

Three new Assistant Directors in Student Activities have joined the Union's team: William O'Brien, Howie Lien, and Jayne Godette. They have done a wonderful job of supporting student clubs and their officers. Jackie Zysk joined us as our Administrative Specialist, and has taken initiative to brighten up the Admin Office on the third floor. Finally, we welcomed Victoria Viskovich as our new Collegiate Store Manager.

Facilities Updates

This year saw many facilities updates aimed to provide additional space for student priorities. The Union's Student Government Suite was renovated over Summer 2022 and beginning of Fall 2022. The goal was to create more open workspaces for students to collaborate by eliminating unnecessary offices that were just being used as storage. The GM Week Office, Elections Office, Judicial Board Office, and W2SZ Offices were all opened up, and the files and materials from these offices were moved to basement storage. The new Student Government Suite has been used much more frequently by students outside of student government as a quiet yet collaborative workspace. The old W2SZ HAM Radio trailer on Sunset Terrace was demolished due to being identified as condemned. Additional facilities updates in the Mueller Center can be found in the Mueller Center Update.

UNION HIGHLIGHTS

CLUB STATUS UPDATES

Organization	Affiliated	Recognized	Funded
Disabled Students at RPI DREAM		3 Feb 2022	
Flying Pig Society		22 Sep 2022	
Girls Who Code		17 Mar 2022	
Multicultural Sorority and Fraternity Council (MSFC)	24 Mar 2022		
RPI BASIC (Brothers and Sisters in Christ)	2 Feb 2022		
RPI Breakdance Club		3 Feb 2022	
RPI Cryptocurrency and Blockchain Technology Club		17 Mar 2022	
Total New Clubs	3	5	0

FY24 BUDGET OVERVIEW

BUDGETING TIMELINE

Oct., 2022	Cost of Attendance Committee notifies the Rensselaer Union of FY24 projected enrollment
Oct 10, 2022	Administrative budgets due in the Budget Management System
Oct 13 – Nov 3, 2022	Administrative budgets reviewed by the Executive Board
Oct 31, 2022	Club budgets due in the Club Management System
Nov 12 & Nov 13, 2022	Club budgets reviewed by the Executive Board
Nov 14, 2022	Club budgets released; appeals form opens
Nov 19, 2022	Club budget appeals heard by the Executive Board
Nov 20 – Dec 6, 2022	Union Activity Fee determined; UAR completed and approved by the Union Annual Report Committee
Dec 7, 2022 (projected)	UAR presented to Student Senate; Student Senate approves recommended Union Activity Fee and the content of the UAR
Jan 16th, 2023	Union budget due to the Institute
Mar 2023 (projected)	President of the Institute and Board of Trustees review the Union Annual Report and approve the Union Activity Fee

FY24 BUDGET OVERVIEW

BUDGETING CONSIDERATIONS

The Executive Board strives to ensure a fair and equitable budgeting process in all aspects. Throughout the year, the Executive Board maintains guidelines which it makes public to assist in budget request formation. These guidelines, known as the Rensselaer Union Guidelines and Procedures (RUGP) were used in the FY24 budgeting process. The most notable change in these guidelines is the inclusion of a travel food allowance of \$7.50 per day, per activity fee paying member. Additionally, the Board may opt to handle situations differently than outlined in the guidelines on a case-by-case basis.

Throughout the year, and especially during the budgeting process, the Executive Board ensures consistent communication with club officers through their assigned Executive Board representatives. Each representative meets with their clubs' officers to discuss each club's purpose, priorities for the coming year, activities and events held in the past year, and any new items the club plans to add to their budget request. Additionally, they work with the club officers to review the budget request and prioritize items based on their essentiality for the club's successful operation. From these meetings, Executive Board representatives can better advocate for the club's priorities within the understood framework of financial means and adherence to budgeting guidelines.

Providing the greatest value to each student serves as the primary, overall objective guiding the budgeting process. To achieve this, the Executive Board evaluates club purposes, goals, and programming to ensure they serve club members and the student body. As the Union cannot fully subsidize every activity or program, some necessitate club dues or event entrance fees to cover programming costs.

The FY24 budgeting process saw an increased emphasis on returning to established budgeting guidelines to ensure the Board provides each club with equitable opportunities for club activities, food expenditure allowances, and marketing opportunities. As FY24 is experiencing this revival of growth in the Activity Fee, it is important to ensure this growth remains steady. Given this, it was decided that there would be no transfers to reserves in FY24 in order to prioritize areas that were stagnant these last few years.

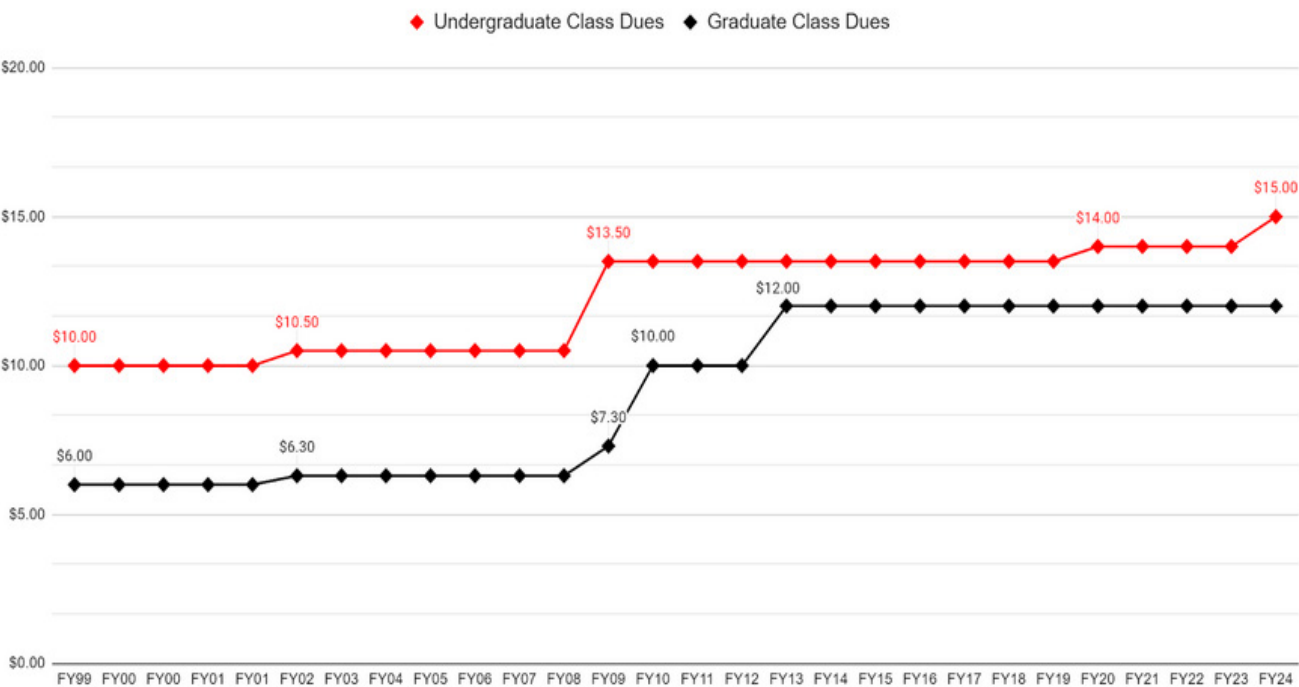
Finally, the budgeting process takes guidance from a planned Activity Fee increase as determined by the Institute. Using this amount along with enrollment numbers, the Executive Board determines guidance limits for club and administrative budgets. Generally, the increase ranges between one and four percent per year.

FY24 BUDGET OVERVIEW

Class Dues

Class Councils were created to promote unity and improve the student experience for their respective classes. There are four Undergraduate Class Councils, one for each respective class, which are overseen by the Undergraduate Council, and the Graduate Council. The same class dues are charged to every undergraduate student regardless of class. The funds are used by each respective class to plan events, programs, and activities for their class such as the Class Tree Ceremony and Senior Week events.

Undergraduate and Graduate Class Dues



Class dues for Fiscal Year 2024 will be \$15.00 per student for undergraduates and \$12.00 per student for graduates, with \$14.50 per undergraduate student being paid to their respective Class Council and \$0.50 paid to the Undergraduate Council. This marks the first increase in the amount that Undergraduate Class Councils will receive since Fiscal Year 2009, when undergraduate class dues increased to \$13.50. Graduate class dues remain the same since Fiscal Year 2012.

By increasing the undergraduate class dues by one dollar, Class Councils will be better able to serve their classes and uphold the many RPI traditions they are responsible for hosting. Since the amount paid to undergraduate Class Councils has not changed since Fiscal Year 2009, the money does not hold the same purchasing power as it once did and cannot be used for the same activities as it previously could due to rising costs. This one dollar increase will help offset some of this discrepancy in purchasing power and the Undergraduate Class Councils will be better equipped to serve their respective classes.

FY24 BUDGET OVERVIEW

FINANCIAL CLUB RETURNS

Clubs have a long history of returning subsidies to the Union. During the budgeting process, the Executive Board takes into account the returns of previous years for each club to ensure programs receive appropriate funding. If a club returns a large portion of their subsidy each year, the Executive Board reviews budgets for discontinued programming and other patterns of unused items.

If a club does not complete a program or spends less than anticipated, the excess is transferred into Facilities Reserves unless the General Reserves amount falls below the approved cap of \$75,000. Additionally, some clubs maintain reserve accounts for large-scale purchases and long-term planning. A breakdown of the Union's reserve accounts, the intended purposes of each, and their respective amounts at the time of the UAR's formation can be found in the appendix.

Club Reserves

Club reserve accounts are created to reduce the one-time cost of large club purchases. Typically, these reserve accounts are added to each fiscal year, pending a positive return at year-end. However, due to budgeting constraints, the Executive Board made the decision to not subsidize any transfers to reserve accounts in FY 2024.

To address potential issues caused by this decision, the Rensselaer Union Executive Board has made the decision to fund Club Contingencies at \$42,500. This will ensure available funds for any clubs' additional subsidy requests during the year. Additionally, any subsidy returned to the Union following the conclusion of FY23 may be used to address immediate club needs

General Reserves

The General Reserves provide an available source of funds for use in the case of an emergency. The account currently does not exceed the cap of \$75,000. If the balance of the account falls below that amount, any excess subsidy from the current fiscal year will be transferred to this account until the cap is reached. Otherwise, any excess subsidy from the current fiscal year will be transferred into the Facilities Reserves account.

Facilities Reserves

The Facilities Reserves account provides funding for projects to regularly improve the facilities and equipment in the Union, the Mueller Center, and other spaces utilized by clubs and organizations. As needs vary from year to year, the Facilities Reserves helps ensure fixes, improvements, and enhancements are completed in a timely and sufficient manner. Recently, funds from the Facilities Reserves accounts have not been used.

INCOME

SOURCES OF INCOME

The Rensselaer Union uses its generated income to fund student activities in different clubs, programs, and special events. Income is created from a wide range of sources, such as contracts with Sodexo and Follett Corporation, and renting space in the Rensselaer Union Building to the Unisex Hair Salon, Ben & Jerry's, and SEFCU. Certain programs offset the Activity Fee for students based on the estimated enrollment split for FY24 of 5,867 undergraduate and 1,030 graduate students, which translated to 85.1 percent and 14.9 percent of the student body, respectively. For example, 85.1 percent of the revenue from Father's Marketplace will partially offset the Activity Fee for undergraduate students, while 14.9 percent offsets the Activity Fee for graduate students. The Collegiate Store offset is calculated based on a different ratio that is explained below.

Auxiliary Businesses and Vendors

The Rensselaer Union building hosts a variety of businesses that are not operated by Union employees. This budget accounts for the Campus Unisex Hair Salon, Ben & Jerry's Ice Cream, and SEFCU. The Union charges rent or commission to these businesses, helping to offset the expenses of the Union.

Student Activity Fee

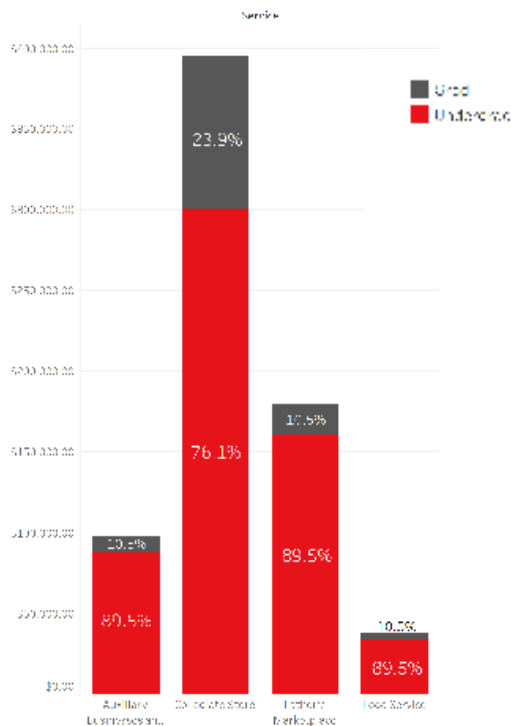
The Summer Activity Fee is considered independently from the regular Activity Fee, calculated at \$19.00 per week that the student is registered for summer classes. The Summer Arch Program has resulted in predominantly undergraduate students paying the Summer Activity Fee, and therefore this is used to reduce the undergraduate Activity Fee only.

Income	Net Income	Undergraduate	Graduate
Net Income by Undergrad/Grad Enrollment (UG 89.5% / G 10.5%)			
Father's Marketplace	\$ 179,613.00	\$ 160,753.64	\$ 18,859.37
Food Service	\$ 37,663.00	\$ 33,708.39	\$ 3,954.62
Auxiliary Business	\$ 97,997.00	\$ 87,707.32	\$ 10,289.69
Subtotal	\$ 315,273.00	\$ 282,169.34	\$ 33,103.67
Net Income by Undergrad/Grad Participation			
Collegiate Store	\$ 395,156.00	\$ 300,861.62	\$ 94,294.00
Subtotal	\$ 395,156.00	\$ 300,861.62	\$ 94,294.00
Total Net Income	\$ 710,429.00	\$ 583,030.96	\$ 127,397.67

INCOME SOURCES OF INCOME

Food Services and Father's Marketplace

Hospitality Services at Rensselaer (Sodexo) administers all food services inside the Rensselaer Union. Father's Marketplace, a store offering food and other convenience items, is the predominant source of Food Service income. The Rensselaer Union receives ten percent of the income from Father's to offset the Activity Fee. The Rathskeller—which includes Thunder Mountain Curry, Halal Shack, Collar City Sliders, and Wild Blue Sushi—and Panera in the McNeil Room generated additional income. This additional income is used first to offset their own expenses, then to offset the Activity Fee. This year, Food Services provided \$37,663 in net income; this income was allocated to several repairs to aging equipment and funds that were set aside for future repairs and replacements.



The Clubhouse Pub

Established in 1990, the Clubhouse Pub is intended to provide services to the members of the Rensselaer community rather than act as a source of revenue. The Clubhouse Pub is one of the most popular services in the Union and has special events throughout the year centered around holidays and other important dates, such as GM Week in the spring. There are also weekly events including Guinness & Wings, Trivia Night, Mug Night, Grad Student Socials, Wine Night, Happy Hour, and Themed Karaoke. As the Pub is used evenly by undergraduate and graduate students, expenses are split evenly.

The Collegiate Store

Rensselaer's bookstore is in the Union and administered by Follett Corporation. It sells textbooks and other course materials, Rensselaer merchandise, and technology for students, parents and alumni. Like Sodexo, Follett returns a portion of its sales income to the Union. This amount is projected to net the Union \$395,156. This amount serves to reduce the undergraduate and graduate activity fees. As data are available for how many undergraduate and graduate students patronize the Collegiate Store, this return is divided according to actual usage: 90% to undergraduates and 10% to graduates.

INCOME

AUXILIARY SERVICES NOTE



On behalf of Rensselaer Dining, Student Mail Services, and the Collegiate Store,

We are extremely proud to be an integral part of the daily student experience at the Union.

Our dining operation offers retail and convenience food service in the McNeil Room, Rathskeller, Father's, and catering support for the Union Pub. We continue to look for the best combination of service and value to our students. This requires working with our campus brands (Collar City, Father's), third party operators (Halal Shack, Thunder Mountain Curry, Wild Blue), and Panera. This includes adjusting our offerings when a third party operator pulls out. Such has been the case with the last two pizza providers. We continue to work on a suitable replacement.

In collaboration with the Business Operations committee, we will be reviewing the master contract with Sodexo to evaluate all of our retail options in the coming semester.

Student Mail Services continues to provide strong daily service to students with their incoming and outgoing packages and mail. We are very satisfied with the convenience of our modernized package delivery system allowing students to access their materials from digitally accessible mailboxes. We are happy to be in the Union to serve students while they are also there for studying, food service, club meetings, gathering with friends, etc.

Our Collegiate Store has welcomed a new Manager, Victoria Viskovich. She has enthusiastically joined our campus community welcoming students, faculty, staff, families, and visitors to the store. Victoria has both an academic and retail clothing background. Quite a remarkable combination to serve our campus. We are very excited about the future of the store. We are emphasizing customer service and continuing to adapt our operation as the market for “learning materials” evolves away from a dominance of textbooks.

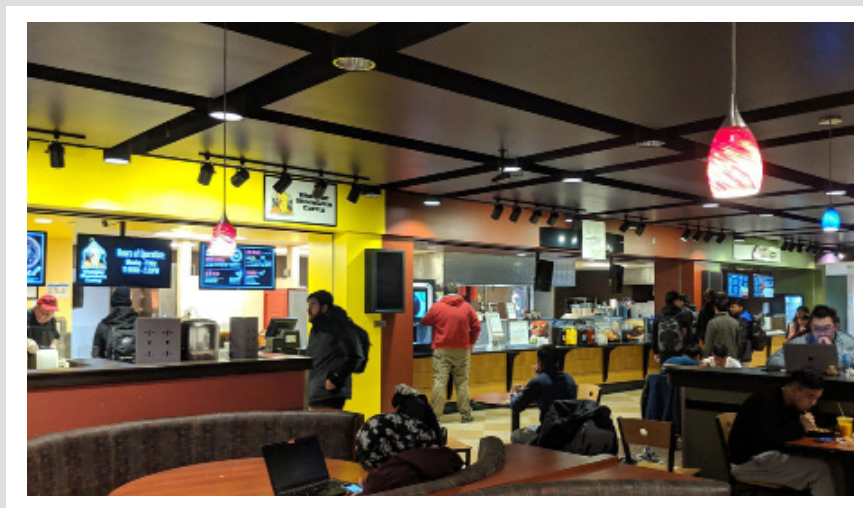
In service to students and support of the Union,

Rachael Capo, Director of Procurement

Brett McDoland, Supervisor Student Mail Services

Michael Ramella, Director of Auxiliary Services

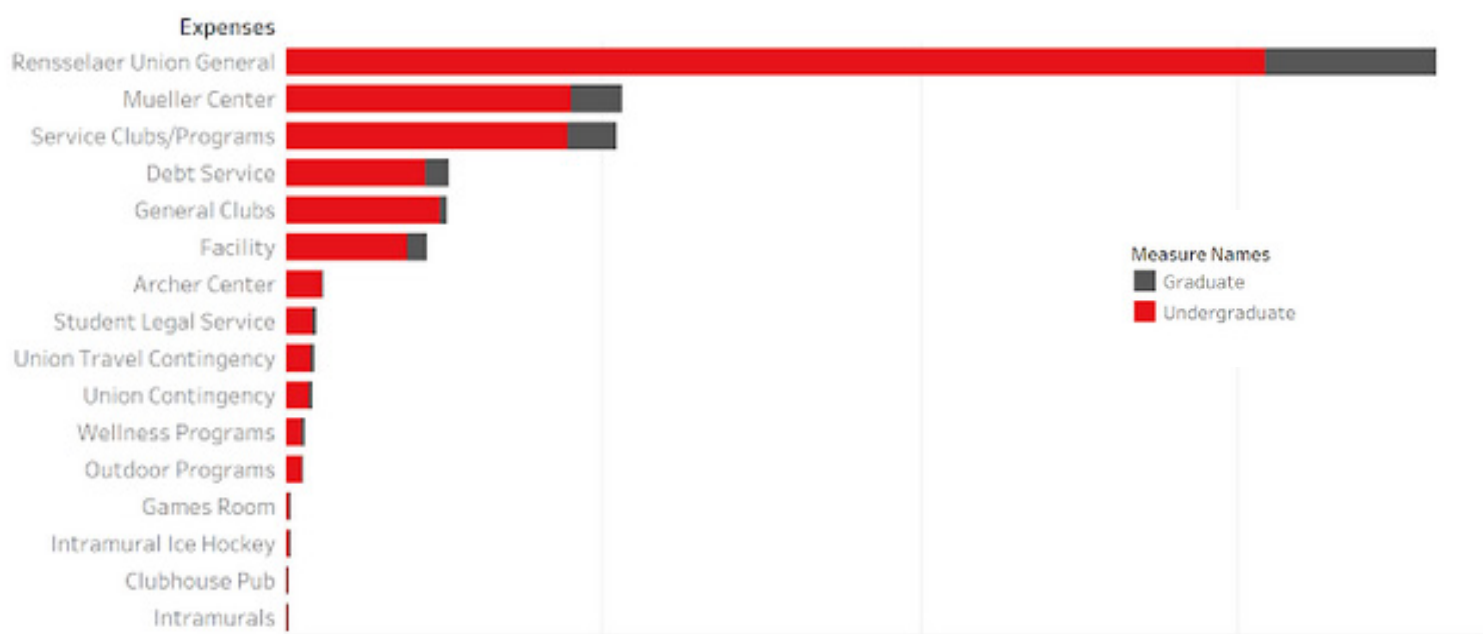
Victoria Viskovich, Manager Collegiate Store



EXPENSES

EXPENSES: WHAT YOUR FEE FUNDS

In order to adjust for differences in undergraduate and graduate participation in Union programming, the Executive Board calculates expenses in two ways: by enrollment and by participation. Programs split by enrollment are funded proportionally to the estimated enrollment of undergraduate and graduate students. The estimated enrollment split for FY24 is 5,867 undergraduate and 1,030 graduate students, which translates to 85.1 percent and 14.1 percent of the student body, respectively. The rest of the programs are split based on student participation in that particular program.



EXPENSES BY ENROLLMENT SPLIT

EXPENSES

Service Organizations

Union service organizations like RPI Ambulance, Student Government, and UPAC. These clubs offer several services to all students and student groups. This year, there was an increase in service organization funding.

Mueller Center

The Mueller Center is available to students for exercise, wellness, and nutrition programming. The Mueller Center serves 4,500 people a week. This year, the Mueller Center added two new offices for Wellness and Outdoor Programs. The Wellness Program benefits students' mental health and nutrition. A wide variety of classes and programs to support holistic wellness were offered this year.

Union Facilities

This portion of the budget is dedicated to updating and repairing Union buildings. In FY23, the Student Government Suite (SGS) was renovated to create more open workspaces for students.

Multicultural and Diversity Programs

These programs are organized by student groups on campus with the support of the Union and include cultural events like Latinx Heritage Month and Pride Month. The Union has several multicultural clubs that receive additional funding, and the Union Multicultural Leadership Council aims to develop these multicultural clubs.

Administrative Office

Professional staff keep the Union operational by assisting in managing its finances, supporting student leadership, and overseeing day-to-day operations. This portion of the budget covers the professional staff, office supplies, and computer equipment necessary for maintaining operations in the Union. In FY23, we hired many new staff members.

Performing Arts Programs

This programming exposes students to music, dance, theater, and art. The Union has sponsored occasional shows in EMPAC by student groups and discounts on and transportation to shows at Proctors Theatre in Schenectady.

Marketing and Publicity

The Union's marketing efforts aim to drive student participation in clubs and increase awareness of Union services. In recent years, much of these efforts are digital, including social media and websites. The Marketing and Publicity budget also allows for physical media like brochures and handouts for prospective students, on-campus advertising, banners, and posters for upcoming events.

Debt Service

Debt Service is the Rensselaer Union repayment of the 1999-2000 Union Revitalization Project. The project was financed to prevent an excessively large activity fee in a single year. FY24 will be year 23 of 25.

Student Staff

The Union's resources are supported by a set of paid student staff from the student body. They serve in community facing roles, such as staffing help desks, and in internal roles, such as creating marketing materials. Over 200 students are employed by the Union. Student staff members work in the Mueller Center, Recreation, Clubhouse Pub, Union Administration Office, various facilities, as well as in the Games Room. The Union employs several students as System Administrators and Developers to work on the Union websites.

Games Room

The Games Room is a popular place for students to unwind and have fun with friends. Students can use the Games Area to enjoy pool, air hockey, table tennis, board games, and even video games. Organizations can also arrange to reserve the Games Area for events.

Legal Services

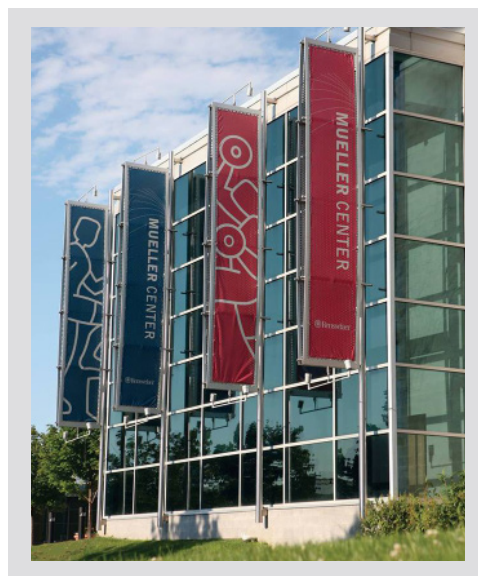
The Union subsidizes legal services for all activity fee paying students. For many years, the Union has retained Hinman, Howard, & Kattell, a full-service legal firm, to help students handle legal cases such as parking tickets, review of lease agreements, or even criminal charges.

Intramural Athletics

Intramural sports are a fun way to destress and build community among students. Around twenty-four sports are offered each year at all levels. The intramural sports budget is offset by fees collected from teams as penalties for missing games.

Union Contingencies

This fund offers support for new clubs, programs or emergency repairs and unforeseen events.



Union Travel Contingencies

This fund is specifically reserved for non-guaranteed club travel expenses. For example, if a club team qualifies for a regional or national competition requiring travel they can request funds from this contingency during the budgeting process. This fund will also support groups that travel with these clubs to support them, like WRPI or the RPI Pep Band.

Special Events

The Union organizes special events for students each year independent of any other club or organization. These include the Red Zone Hockey Hype in September 2022.

EXPENSES BY PARTICIPATION SPLIT

EXPENSES

Archer Center for Student Leadership

The Archer Center provides leadership education and support for students through workshops, classes, and events. Archer Center staff also administer professional development courses and targeted training for club officers, members of LEAP, and professional societies and organizations. As its services are used much more frequently by undergraduates than graduates, Archer Center expenses are split 97% to 3% respectively.

The Archer Center subsidy remained the same at \$60,000 from the Union. They reorganized their budget to better meet the needs of the students they work with. Their student staff is now paid from the Union's Student Staffing budget – not the Archer Center's budget.

General Clubs

General Clubs, a category that encompasses some of the most popular groups in the Student Union, are the clubs not designated as Service Clubs. The Union has over 88 General Clubs. The cost of each General Club is calculated by multiplying the Undergraduate-Graduate ratio from general club membership by the subsidy for the club. This year, funding for General Clubs increased by over \$60,000.

Intramural Ice Hockey

Intramural Ice Hockey expenses are not included in the General Intramural budget when calculating the Activity Fee. Instead, the Intramural Ice Hockey expenses are split by participation data. For FY24, the expenses are split 95% undergraduate and 5% graduate.

EXPENSES

EXPENSE BREAKDOWN

Expenses		Net Expense	Undergraduate	Graduate
Net Expenses by the Undergrad/Grad Enrollment (UG 85.1% / GR 14.9%)				
Rensselaer Union General		\$ 1,813,420.00	\$ 1,543,220.42	\$ 270,199.58
Service Clubs and Programs (including performing arts - administration)		\$ 521,325.00	\$ 443,647.58	\$ 77,677.43
Union Contingency		\$ 42,500.00	\$ 36,167.50	\$ 6,332.50
Union Travel Contingency with Grad Eligibility		\$ 45,500.00	\$ 38,720.50	\$ 6,779.50
Student Legal Service		\$ 50,000.00	\$ 42,550.00	\$ 7,450.00
Facilities (Union General & Playhouse)		\$ 224,300.00	\$ 190,879.30	\$ 33,420.70
Debt Service for Union Renovation Project		\$ 258,890.00	\$ 220,315.39	\$ 38,574.61
Mueller Center		\$ 530,073.00	\$ 451,092.12	\$ 78,980.88
Outdoor Programs		\$ 29,275.00	\$ 24,913.03	\$ 4,361.98
Wellness Programs		\$ 31,170.00	\$ 26,525.67	\$ 4,644.33
Games Room		\$ 8,000.00	\$ 6,808.00	\$ 1,192.00
Intramural Administration (without Intramural Ice Hockey)		\$ 2,850.00	\$ 2,425.35	\$ 424.65
Clubhouse Pub	UG 50% G 50%	\$ 3,079.00	\$ 1,539.50	\$ 1,539.50
Subtotal: Enrollment Split		\$3,297,466.00	\$2,783,061.29	\$514,404.71
Net Expenses by the Undergrad/Grad Participation				
Intramural Ice Hockey	UG 95% G 5%	\$ 5,820.00	\$ 5,529.00	\$ 291.00
General Clubs	UG 93% G 7%	\$ 255,740.00	\$ 242,953.00	\$ 12,787.00
Archer Center	UG 97% G 3%	\$ 60,000.00	\$ 57,000.00	\$ 3,000.00
Subtotal: Participation Split		\$ 321,560.00	\$ 305,482.00	\$ 16,078.00
Total Net Expenses		\$ 3,881,942.00	\$ 3,334,286.36	\$ 547,655.66

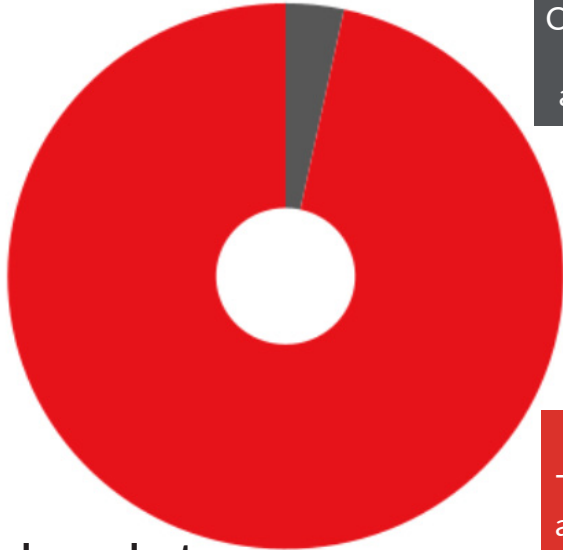
EXPENSES

EXPENSE PERCENT INCREASES

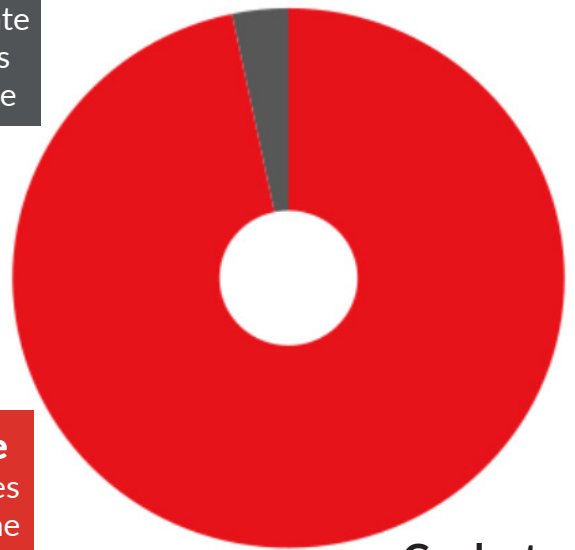
Expenses		FY24 Expense	FY23 Expense	% Increase
Rensselaer Union General		\$ 1,813,420.00	\$1,464,021.00	23.87%
Service Clubs and Programs (including performing arts - administration)		\$ 521,325.00	\$693,721.00	-24.85%
Union Contingency		\$ 42,500.00	\$55,000.00	-22.73%
Union Travel Contingency with Grad Eligibility		\$ 45,500.00	\$45,500.00	0.00%
Student Legal Service		\$ 50,000.00	\$46,930.00	6.54%
Facilities (Union General & Playhouse)		\$ 224,300.00	\$220,063.00	1.93%
Debt Service for Union Renovation Project		\$ 258,890.00	\$258,890.00	0.00%
Mueller Center		\$ 530,073.00	\$549,064.00	-3.46%
Outdoor Programs		\$ 29,275.00	-	-
Wellness Programs		\$ 31,170.00	-	-
Games Room		\$ 8,000.00	\$8,324.00	-3.89%
Intramural Administration (without Intramural Ice Hockey)		\$ 2,850.00	\$4,815.00	-40.81%
Clubhouse Pub	UG 50% G 50%	\$ 3,079.00	\$3,462.00	-11.06%
Intramural Ice Hockey	UG 95% G 5%	\$ 5,820.00	\$23,755.00	-75.50%
General Clubs	UG 93% G 7%	\$ 255,740.00	\$227,833.00	12.25%
Archer Center	UG 97% G 3%	\$ 60,000.00	\$60,000.00	0.00%
Total Net Expenses		\$ 3,881,942.00	\$ 3,661,378.00	6.02%

ACTIVITY FEE RECOMMENDATION

Class Dues
The Undergraduate Council and the Graduate Council sets class dues approved by the Senate



Undergraduate



Graduate

Union Activity Fee
The remaining expenses are offset by the income by the Activity Fee

Activity Fee	Net Total	Undergraduate	Graduate
Net Expense	\$3,881,942.00	\$3,334,286.36	\$547,655.66
Net Income	(\$710,429.00)	(\$583,030.96)	(\$127,397.67)
Total Activity Fee	\$3,171,513.00	\$2,751,255.40	\$420,257.98
Summer Activity Fees	(\$235,950.00)	(\$235,950.00)	\$-
Arch Activity Fees	(\$57,000.00)	\$-	(\$57,000.00)
Academic Year Fee Total	\$3,114,513.00	\$2,515,305.40	\$363,257.98
Union Activity Fee per student		\$429.00	\$353.00
Class Dues per student		\$15.00	\$12.00
Total Activity Fee per student		\$444.00	\$365.00
Change from FY23		3.26%	2.82%

APPENDICES

Table of Appendices

- A. Activity Fee Recommendation Full Calculation
- B. Club Classifications
- C. Union Administration Organizational Chart
- D. Student Government Organizational Chart
- E. Historical Activity Fee Data
- F. General Club Subsidies
- G. Service Club Subsidies
- H. Administrative Subsidies
- I. Union Reserves Account Breakdown

APPENDIX A:

ACTIVITY FEE RECOMMENDATION

Expenses		Net Expense	Undergraduate	Graduate
Net Expenses by the Undergrad/Grad Enrollment (UG 85.1% / GR 14.9%)				
Rensselaer Union General		\$ 1,813,420.00	\$ 1,543,220.42	\$ 270,199.58
Service Clubs and Programs (including performing arts - administration)		\$ 521,325.00	\$ 443,647.58	\$ 77,677.43
Union Contingency		\$ 42,500.00	\$ 36,167.50	\$ 6,332.50
Union Travel Contingency with Grad Eligibility		\$ 45,500.00	\$ 38,720.50	\$ 6,779.50
Student Legal Service		\$ 50,000.00	\$ 42,550.00	\$ 7,450.00
Facilities (Union General & Playhouse)		\$ 224,300.00	\$ 190,879.30	\$ 33,420.70
Debt Service for Union Renovation Project		\$ 258,890.00	\$ 220,315.39	\$ 38,574.61
Mueller Center		\$ 530,073.00	\$ 451,092.12	\$ 78,980.88
Outdoor Programs		\$ 29,275.00	\$ 24,913.03	\$ 4,361.98
Wellness Programs		\$ 31,170.00	\$ 26,525.67	\$ 4,644.33
Games Room		\$ 8,000.00	\$ 6,808.00	\$ 1,192.00
Intramural Administration (without Intramural Ice Hockey)		\$ 2,850.00	\$ 2,425.35	\$ 424.65
Clubhouse Pub	UG 50% G 50%	\$ 3,079.00	\$ 1,539.50	\$ 1,539.50
Subtotal: Enrollment Split		\$3,297,466.00	\$2,783,061.29	\$514,404.71
Net Expenses by the Undergrad/Grad Participation				
Intramural Ice Hockey	UG 95% G 5%	\$ 5,820.00	\$ 5,529.00	\$ 291.00
General Clubs	UG 93% G 7%	\$ 255,740.00	\$ 242,953.00	\$ 12,787.00
Archer Center	UG 97% G 3%	\$ 60,000.00	\$ 57,000.00	\$ 3,000.00
Subtotal: Participation Split		\$ 321,560.00	\$ 305,482.00	\$ 16,078.00
Total Net Expenses		\$ 3,881,942.00	\$ 3,334,286.36	\$ 547,655.66

APPENDIX A: ACTIVITY FEE RECOMMENDATION

Income	Net Income	Undergraduate	Graduate
Net Income by Undergrad/Grad Enrollment (UG 89.5% / G 10.5%)			
Father's Marketplace	\$ 179,613.00	\$ 160,753.64	\$ 18,859.37
Food Service	\$ 37,663.00	\$ 33,708.39	\$ 3,954.62
Auxiliary Business	\$ 97,997.00	\$ 87,707.32	\$ 10,289.69
Subtotal	\$ 315,273.00	\$ 282,169.34	\$ 33,103.67
Net Income by Undergrad/Grad Participation			
Collegiate Store	\$ 395,156.00	\$ 300,861.62	\$ 94,294.00
Subtotal	\$ 395,156.00	\$ 300,861.62	\$ 94,294.00
Total Net Income	\$ 710,429.00	\$ 583,030.96	\$ 127,397.67

Activity Fee	Net Total	Undergraduate	Graduate
Net Expense	\$3,881,942.00	\$3,334,286.36	\$547,655.66
Net Income	(\$710,429.00)	(\$583,030.96)	(\$127,397.67)
Total Activity Fee	\$3,171,513.00	\$2,751,255.40	\$420,257.98
Summer Activity Fees	(\$235,950.00)	(\$235,950.00)	\$-
Arch Activity Fees	(\$57,000.00)	\$-	(\$57,000.00)
Academic Year Fee Total	\$3,114,513.00	\$2,515,305.40	\$363,257.98
Union Activity Fee per student		\$429.00	\$353.00
Class Dues per student		\$15.00	\$12.00
Total Activity Fee per student		\$444.00	\$365.00
Change from FY23		3.26%	2.82%

APPENDIX B:

CLUB CLASSIFICATIONS

Recognized Classification

Recognized clubs have a Union-approved purpose and constitution and are eligible to receive funding from the Union. Recognized clubs are prohibited from limiting club membership, though they may be able to restrict membership for certain club activities, so long as every club member is given an equal opportunity to participate. For example, Union-recognized club sports may restrict participation in competitions to certain varsity club members, but must hold fair tryouts to all members of the Union. Additionally, clubs that restrict membership must allow any club member to participate in non-competitive events, such as practices or training. An example of a recognized club is LatinX Heritage Month Planning Committee, which aims to raise awareness and plan LatinX events on campus

Funded Classification

Funded clubs are Union-recognized clubs that receive funding from the Union. Funded clubs receive representatives on the Rensselaer Union Executive Board who assist club officers in creating and preparing fiscal year budgets and subsidy requests. An example of a funded club would be RPI Ambulance, which receives funding to provide 911 coverage to campus.

Affiliated Classification

Affiliated clubs may not receive funding from the Union, but may reasonably restrict membership. Unlike Union-recognized and funded clubs, affiliated clubs may have ties to national organizations or RPI academic departments. An example of an affiliated club is The Forge. The Forge, which is funded by the School of Engineering, provides a makerspace on campus that allows students to rapidly prototype design projects using 3D printers, laser cutters, and an electronics workstation.

Categories by Purpose

To facilitate support of organizations and to group clubs based on similarities of interests and purposes, the Executive Board further categorizes each organization as one of the following:

- Academic & Professional
- Campus Programming
- Club Sports
- Greek Life
- Hobby and Special Interest
- Media
- Multicultural
- Recreation and Fitness
- Religious
- Service & Volunteerism
- Student Government
- Visual & Performing Arts

APPENDIX B: CLUB CLASSIFICATIONS

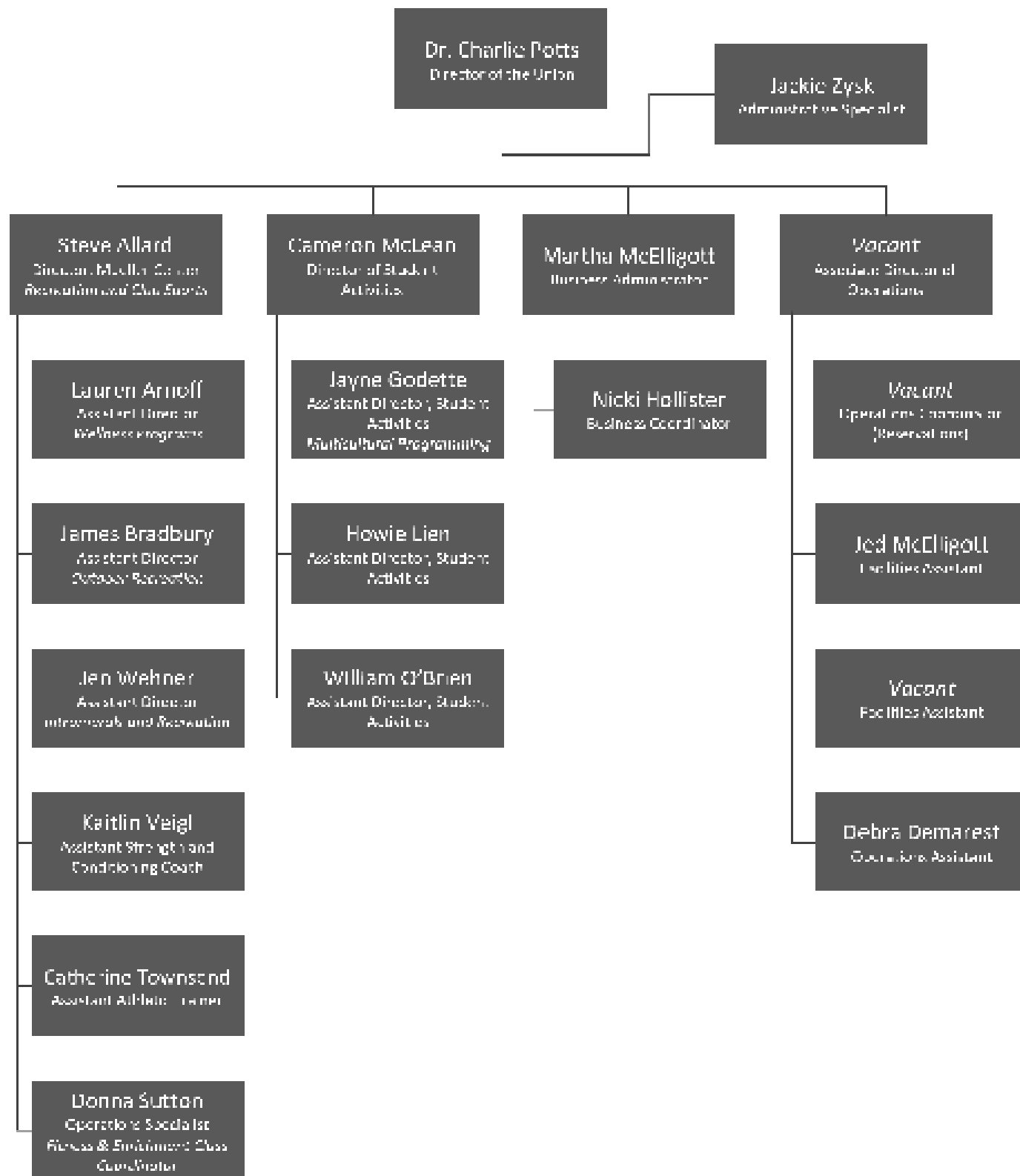
Club Recognition Process

As a club advances through the stages of the Union club process, several steps must be taken:

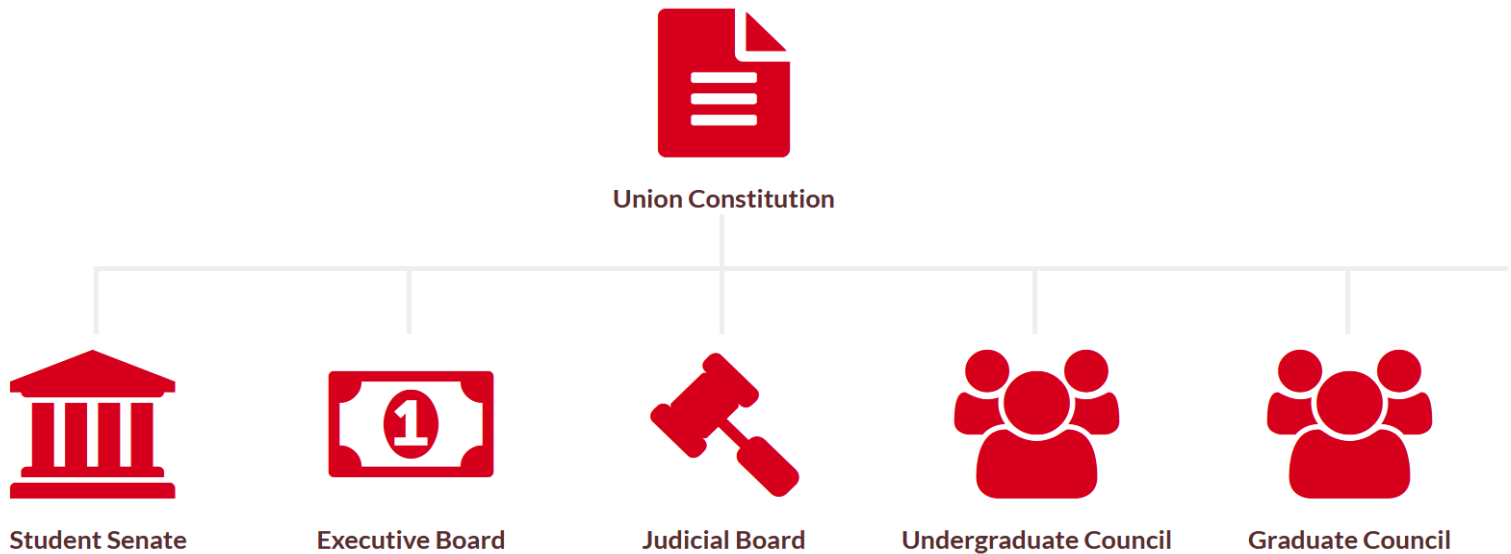
- The student will meet with a member of the Club Operations Committee (ClubOps) and a member of the Union Administrative staff to discuss the club's goals, potential risks and risk mitigation strategies, recruitment strategies, and to fill out new club paperwork.
- The student will work with ClubOps to create a starter constitution, which must meet Union and Institute policies.
- The club will hold at least three general body meetings (GBM) that must be open to the entire campus. The club will take attendance at each meeting. This step ensures that newly formed clubs recruit enough members to allow for continuity between semesters/academic years.
- The club will present the attendance numbers to ClubOps, which will then ensure that the club meets minimum membership levels and meets or exceeds Union and Institute policy.
- The club will then hold elections, and ClubOps will submit a new club recognition/affiliation recommendation to the Rensselaer Union Executive Board. The assigned ClubOps member and the newly elected club officers will then present the club's documents, goals, and membership tallies to the Executive Board, which will then vote to approve the club's recognition or affiliation.

Resource	Unrecognized	Forming	Affiliated	Recognized, Unfunded	Recognized, Funded
Meeting Spaces	No	Yes	Yes	Yes	Yes
Listed on Club Lists	No	Yes	Yes	Yes	Yes
Invited to Union Events	No	Yes	Yes	Yes	Yes
Union Web Services	No	No	Yes	Yes	Yes
Union Funding	No	No	No	No	Yes

APPENDIX C: UNION ADMIN ORG CHART



APPENDIX D: STUDENT GOVERNMENT ORG CHART



Cait Bennett
156th Grand Marshal
Leads the Student Senate



Colleen Corrigan
133rd President of the Union
Leads the Executive Board

APPENDIX E: HISTORICAL ACTIVITY FEE DATA



APPENDIX F: GENERAL CLUB SUBSIDIES

Club Name	Members		Approved Expense				Approved Income				Approved Subsidy			
	UG	G	FY 2022	FY 2023	FY 2024	FY23 to FY24 %	FY 2022	FY 2023	FY 2024	FY23 to FY24 %	FY 2022	FY 2023	FY 2024	FY23 to FY24 %
ACHA Hockey	20	2	\$ 55,685.00	\$ 53,155.00	\$ 66,488.00	25.08%	\$ 26,250.00	\$ 29,400.00	\$ 42,000.00	42.86%	\$ 29,435.00	\$ 23,755.00	\$ 24,488.00	3.09%
Active Minds	12	1	\$ 1,911.00			0 \$	-			0	\$ 1,911.00			0
African Students Association	37	6	\$ 3,389.00	\$ 3,231.00	\$ 3,471.00	7.43%	\$ 2,179.00	\$ 2,074.00	\$ 2,549.00	22.90%	\$ 1,210.00	\$ 1,157.00	\$ 922.00	-20.31%
Altaña Latina	53	3	\$ 2,508.00	\$ 2,908.00	\$ 2,656.00	-8.67%	\$ 870.00	\$ 1,395.00	\$ 285.00	-79.57%	\$ 1,638.00	\$ 1,513.00	\$ 2,371.00	56.71%
Archery Club	23	9	\$ 6,203.00	\$ 3,416.00	\$ 3,036.00	-11.12%	\$ 3,486.00	\$ 2,360.00	\$ 1,930.00	-18.22%	\$ 2,717.00	\$ 1,056.00	\$ 1,106.00	4.73%
Art Club	87	5	\$ 142.00	\$ 162.00	\$ 410.00	153.09%	\$ -	\$ -	\$ -		\$ 142.00	\$ 162.00	\$ 410.00	153.09%
Astrophysical Society	50	6	\$ 881.00	\$ 900.00	\$ 828.00	-8.00%	\$ 540.00	\$ 620.00	\$ 540.00	-12.90%	\$ 341.00	\$ 280.00	\$ 288.00	2.86%
Badminton	48	4	\$ 4,364.00	\$ 4,490.00	\$ 3,095.00	-31.07%	\$ 3,920.00	\$ 3,989.00	\$ 2,475.00	-37.64%	\$ 444.00	\$ 521.00	\$ 620.00	19.00%
Ballroom Dance	33	12	\$ 39,182.00	\$ 31,336.00	\$ 36,145.00	15.35%	\$ 32,375.00	\$ 24,615.00	\$ 29,185.00	18.57%	\$ 6,807.00	\$ 6,721.00	\$ 6,960.00	3.56%
Black Students Alliance	106	10	\$ 6,760.00	\$ 7,815.00	\$ 9,065.00	15.99%	\$ 750.00	\$ 2,050.00	\$ 1,725.00	-15.85%	\$ 6,010.00	\$ 5,765.00	\$ 7,340.00	27.32%
Board Game Club	44	3	\$ 179.00	\$ 374.00	\$ 552.00	47.59%	\$ 60.00	\$ -	\$ -		\$ 119.00	\$ 374.00	\$ 552.00	47.59%
Boxing	6	4	\$ 230.00	\$ 350.00		-100.00%	\$ -	\$ -	\$ -		\$ 230.00	\$ 350.00		-100.00%
Capoeira	3	1	\$ 121.00			0 \$	-			0	\$ 121.00			0
Cheerleading	19	0	\$ 230.00	\$ 4,979.00	\$ 5,303.00	6.51%	\$ -	\$ -	\$ -		\$ 230.00	\$ 4,979.00	\$ 5,303.00	6.51%
Chess Club	48	4			\$ 805.00	0		\$ -	\$ -	0			\$ 805.00	0
Chinese American Students Association	85	4	\$ 594.00	\$ 1,080.00	\$ 1,775.00	64.35%	\$ 360.00	\$ 360.00	\$ -	-100.00%	\$ 234.00	\$ 720.00	\$ 1,775.00	146.53%
Chinese Students and Scholars Association	48	5	\$ 2,584.00	\$ 2,292.00	\$ 4,024.00	75.57%	\$ -	\$ -	\$ -		\$ 2,584.00	\$ 2,292.00	\$ 4,024.00	75.57%
Club Baseball	28	1	\$ 6,459.00	\$ 8,060.00	\$ 3,795.00	-52.92%	\$ 4,440.00	\$ 5,850.00	\$ 1,125.00	-80.77%	\$ 2,019.00	\$ 2,210.00	\$ 2,670.00	20.81%
Conversation Corner and Mandarin Club	32	1	\$ 472.00	\$ 268.00	\$ 138.00	-48.51%	\$ -	\$ -	\$ -		\$ 472.00	\$ 268.00	\$ 138.00	-48.51%
Crew	38	1	\$ 42,536.00	\$ 38,441.00	\$ 40,675.00	5.81%	\$ 29,883.00	\$ 26,648.00	\$ 30,089.00	12.91%	\$ 12,653.00	\$ 11,793.00	\$ 10,586.00	-10.23%
Curling Club	23	3	\$ 15,124.00	\$ 13,968.50	\$ 15,361.00	9.97%	\$ 12,293.00	\$ 11,206.50	\$ 10,717.00	-4.37%	\$ 2,831.00	\$ 2,762.00	\$ 4,644.00	68.14%
Cycling	31	1	\$ 14,009.00	\$ 9,866.00	\$ 23,033.00	133.46%	\$ 10,988.00	\$ 6,740.00	\$ 14,144.00	109.85%	\$ 3,021.00	\$ 3,126.00	\$ 8,889.00	184.36%
Dance Club	30	7	\$ 15,292.00	\$ 13,813.00	\$ 7,738.00	-43.98%	\$ 7,625.00	\$ 6,075.00	\$ 5,915.00	-2.63%	\$ 7,667.00	\$ 7,738.00	\$ 8,467.00	9.42%
Dance Dance Revolution	30	0	\$ 1,300.00	\$ 914.00	\$ 1,156.00	26.48%	\$ 450.00	\$ 355.00	\$ 400.00	12.88%	\$ 850.00	\$ 550.00	\$ 756.00	35.24%
Dance Team	13	2	\$ 25,362.00	\$ 25,324.00	\$ 28,185.00	11.30%	\$ 13,336.00	\$ 13,336.00	\$ 14,412.00	8.07%	\$ 12,026.00	\$ 11,988.00	\$ 13,773.00	14.89%
Design for America at Renaissance (DFA)	3	0	\$ 3,791.00	\$ 3,845.00	\$ -	-100.00%	\$ 1,930.00	\$ 1,875.00	\$ -	-100.00%	\$ 1,861.00	\$ 1,970.00	\$ -	-100.00%
Disc Golf Club	13	3	\$ -	\$ 552.00	\$ 720.00	30.43%	\$ -	\$ 200.00	\$ 350.00	75.00%	\$ -	\$ 352.00	\$ 370.00	5.11%
Embedded Hardware Club	18	4	\$ 1,714.00	\$ 1,816.00	\$ 2,100.00	15.64%	\$ 345.00	\$ 340.00	\$ 330.00	-2.94%	\$ 1,369.00	\$ 1,476.00	\$ 1,770.00	19.92%
Engineers for a Sustainable World	18	3	\$ 578.00	\$ 610.00	\$ 610.00	0.00%	\$ 235.00	\$ 200.00	\$ 215.00	7.50%	\$ 343.00	\$ 410.00	\$ 395.00	-3.66%
Engineers Without Borders	15	1	\$ 3,915.00	\$ 4,475.00	\$ 4,693.00	4.87%	\$ 1,270.00	\$ 1,845.00	\$ 1,404.00	-23.90%	\$ 2,645.00	\$ 2,630.00	\$ 3,289.00	25.06%
Equestrian Club	24	0	\$ 55,987.00	\$ 58,161.00	\$ 66,569.00	14.46%	\$ 41,986.00	\$ 44,240.00	\$ 51,589.00	16.61%	\$ 14,001.00	\$ 13,921.00	\$ 14,980.00	7.61%
Fencing	47	3	\$ 18,238.00	\$ 17,044.00	\$ 17,366.00	1.89%	\$ 12,228.00	\$ 10,988.00	\$ 10,910.00	-0.71%	\$ 6,010.00	\$ 6,056.00	\$ 6,456.00	6.61%
Fishing Club	51	1	\$ 907.00	\$ 882.00	\$ 1,405.00	59.30%	\$ 150.00	\$ -	\$ -	-100.00%	\$ 757.00	\$ 732.00	\$ 1,405.00	91.94%
Foreign Language Club	12	2	\$ 114.00	\$ 130.00	\$ 122.00	-6.15%	\$ -	\$ -	\$ -		\$ 114.00	\$ 130.00	\$ 122.00	-6.15%
Game Development Club	65	7	\$ -	\$ 900.00	\$ 1,755.00	95.00%	\$ -	\$ 600.00	\$ 840.00	40.00%	\$ -	\$ 300.00	\$ 915.00	205.00%
Gajide Sher Bhangra	15	0		\$ 1,378.00	\$ 2,244.00	62.84%		\$ 915.00	\$ 1,475.00	61.20%		\$ 463.00	\$ 769.00	66.09%
Hawai'i Cultural Club	13	6	\$ 285.00			0 \$	-			0	\$ 285.00			0
Holocaust Remembrance Committee	0	2	\$ 330.00			0 \$	-			0	\$ 330.00			0
Hong Kong Students Association	31	5	\$ 490.00	\$ 360.00	\$ 360.00	0.00%	\$ 340.00	\$ 200.00	\$ 200.00	0.00%	\$ 150.00	\$ 160.00	\$ 160.00	0.00%
Humans vs Zombies	446	14	\$ 2,393.00	\$ 2,068.00	\$ 2,182.00	5.51%	\$ 225.00	\$ -	\$ 225.00		\$ 2,168.00	\$ 2,068.00	\$ 1,957.00	-5.37%

APPENDIX F:

GENERAL CLUB SUBSIDIES

Club Name	Members		Approved Expense				Approved Income				Approved Subsidy			
	UG	G	FY 2022	FY 2023	FY 2024	FY23 to FY24 %	FY 2022	FY 2023	FY 2024	FY23 to FY24 %	FY 2022	FY 2023	FY 2024	FY23 to FY24 %
Indian Students Association (ISA)	148	19	\$ 2,370.00	\$ 2,480.00	\$ 4,502.00	81.53%	\$ 725.00	\$ 1,175.00	\$ 3,745.00	218.72%	\$ 1,645.00	\$ 1,305.00	\$ 757.00	-41.99%
	2	3	\$ 791.00	\$ 679.00		-100.00%	\$ 300.00	\$ 255.00		-100.00%	\$ 491.00	\$ 424.00		-100.00%
Isshinyu Karate	7	4	\$ 983.00	\$ -			\$ 180.00	\$ -			\$ 803.00	\$ -		
Japanese Cultural Association	15	5	\$ 936.00	\$ 733.00	\$ 272.00	-62.89%	\$ 325.00	\$ 275.00	\$ -	-100.00%	\$ 611.00	\$ 458.00	\$ 272.00	-40.61%
Judo Club	5	0	\$ 37.00	\$ 37.00		-100.00%	\$ -	\$ -			\$ 37.00	\$ 37.00		-100.00%
Juggling Club	29	1	\$ 1,888.00	\$ 1,988.00	\$ 2,368.00	20.33%	\$ 900.00	\$ 900.00	\$ 1,100.00	22.22%	\$ 988.00	\$ 1,068.00	\$ 1,268.00	18.73%
Kendo	77	2	\$ 995.00	\$ 680.00	\$ 1,465.00	115.44%	\$ -	\$ -	\$ -		\$ 995.00	\$ 680.00	\$ 1,465.00	115.44%
Korean Students Association	1	1	\$ 123.00	\$ -			\$ -	\$ -			\$ 123.00	\$ -		
Kung Fu	135	11	\$ 900.00	\$ 900.00	\$ 900.00	0.00%	\$ 100.00	\$ 100.00	\$ 100.00	0.00%	\$ 800.00	\$ 800.00	\$ 800.00	0.00%
League of Legends (LOL)	11	1	\$ 4,224.00	\$ 6,050.00	\$ 5,219.00	-13.74%	\$ 1,926.00	\$ 3,465.00	\$ 2,453.00	-29.21%	\$ 2,298.00	\$ 2,585.00	\$ 2,766.00	7.00%
Men's Club Basketball	33	2	\$10,615.00	\$ 4,379.00	\$12,883.00	194.20%	\$ 8,745.00	\$ 2,145.00	\$ 9,301.00	333.61%	\$ 1,870.00	\$ 2,234.00	\$ 3,582.00	60.34%
Men's Club Soccer	17	0	\$ 7,330.00	\$ 5,080.00	\$ 5,841.00	14.98%	\$ 3,140.00	\$ 2,890.00	\$ 2,928.00	1.31%	\$ 4,190.00	\$ 2,190.00	\$ 2,913.00	33.01%
Men's Lacrosse Club	7	1	\$ 6,770.00	\$ 6,780.00	\$ 3,990.00	-41.15%	\$ 150.00	\$ 150.00	\$ 150.00	0.00%	\$ 6,620.00	\$ 6,630.00	\$ 3,840.00	-42.08%
Model Railroad	258	17	\$23,250.00	\$24,745.50	\$13,490.00	-45.49%	\$14,451.00	\$16,583.50	\$ 9,020.00	-45.61%	\$ 8,799.00	\$ 8,162.00	\$ 4,470.00	-45.23%
Outing Club	9	11	\$ 1,304.00	\$ 585.00	\$ 282.00	-51.79%	\$ -	\$ -	\$ -		\$ 1,304.00	\$ 585.00	\$ 282.00	-51.79%
Pakistani Students Association (PAKSA)	44	7	\$ 3,895.00	\$ 4,120.00	\$ 1,339.00	-67.50%	\$ -	\$ -	\$ 290.00		\$ 3,895.00	\$ 4,120.00	\$ 1,049.00	-74.54%
Philippine American League	28	1	\$ 5,004.00	\$ 5,108.00	\$ 3,884.00	-23.96%	\$ 4,300.00	\$ 4,304.00	\$ 3,050.00	-29.14%	\$ 704.00	\$ 804.00	\$ 834.00	3.73%
Photo Club	44	4	\$ 878.00	\$ -	\$ 3,268.00		\$ 200.00	\$ -	\$ 200.00		\$ 678.00	\$ -	\$ 3,068.00	
Pride Alliance	22	1	\$ 4,532.00	\$ 4,366.00	\$ 7,609.00	74.28%	\$ 2,310.00	\$ 2,175.00	\$ 4,168.00	91.63%	\$ 2,222.00	\$ 2,191.00	\$ 3,441.00	57.05%
Quidditch Club														
Rensselaer Pokemon Organization	76	6	\$ -	\$ 384.00	\$ 796.00	107.29%	\$ -	\$ -	\$ -		\$ -	\$ 384.00	\$ 796.00	107.29%
Racquetball	2	4	\$ 9,783.00	\$ 8,987.00	\$ 5,981.00	-33.45%	\$ 5,020.00	\$ 4,045.00	\$ 1,500.00	-62.92%	\$ 4,763.00	\$ 4,942.00	\$ 4,481.00	-9.33%
Rensselaer Running Club	32	1	\$ 3,080.00	\$ 4,140.00	\$ 2,555.00	-38.29%	\$ 2,510.00	\$ 3,570.00	\$ 1,678.00	-53.00%	\$ 570.00	\$ 570.00	\$ 877.00	53.86%
Rensselaer Science Fiction and Anime	14	0	\$42,943.00		\$ -	0	\$42,543.00		\$ -	0	\$ 400.00		\$ -	0
Rifle Club	31	2	\$ 9,796.00	\$ 6,848.00	\$ 7,884.00	15.13%	\$ 8,178.00	\$ 4,670.00	\$ 5,380.00	15.20%	\$ 1,618.00	\$ 2,178.00	\$ 2,504.00	14.97%
RRPI Flying Club	21	2	\$ 6,220.00	\$ 5,228.00	\$ 7,678.00	46.86%	\$ 4,570.00	\$ 3,590.00	\$ 5,480.00	52.65%	\$ 1,650.00	\$ 1,638.00	\$ 2,198.00	34.19%
RRPI Rudras	13	0	\$ 3,660.00	\$ 3,660.00	\$ 4,560.00	24.59%	\$ 2,040.00	\$ 2,040.00	\$ 2,565.00	25.74%	\$ 1,620.00	\$ 1,620.00	\$ 1,995.00	23.15%
RRPI Rounak	22	0	\$ -	\$ 1,428.00	\$ 3,553.00	148.81%	\$ -	\$ 1,130.00	\$ 2,558.00	126.37%	\$ -	\$ 298.00	\$ 995.00	233.89%
RRPI Spaceflight Society	63	7	\$ 720.00	\$ 819.50	\$ 1,304.00	59.12%	\$ 250.00	\$ 287.50	\$ -	-100.00%	\$ 470.00	\$ 532.00	\$ 1,304.00	145.11%
RRPI Spikeball Roundnet Club	33	1	\$ 2,290.00	\$ 2,708.00	\$ 2,876.00	6.20%	\$ 1,692.00	\$ 2,045.00	\$ 2,020.00	-1.22%	\$ 598.00	\$ 663.00	\$ 856.00	29.11%
Rugby	60	7	\$31,898.00	\$33,022.00	\$31,197.00	-5.53%	\$20,901.00	\$21,897.00	\$17,944.00	-18.05%	\$10,997.00	\$11,125.00	\$13,253.00	19.13%
SKI and Snowboard Club	63	6	\$19,273.00	\$ 4,213.00	\$16,575.00	293.43%	\$18,910.00	\$ 1,500.00	\$12,530.00	735.33%	\$ 363.00	\$ 2,713.00	\$ 4,045.00	49.10%
SKI Team	27	0	\$32,095.00	\$32,119.00	\$33,361.00	3.87%	\$18,605.00	\$18,980.00	\$19,610.00	3.32%	\$13,490.00	\$13,139.00	\$13,751.00	4.66%
Slavic Students Association	7	4	\$ 708.00	\$ 608.00		-100.00%	\$ 80.00	\$ 80.00		-100.00%	\$ 628.00	\$ 528.00		-100.00%
Sole Survivors	15	12	\$ 626.00	\$ 394.00		-100.00%	\$ -	\$ -			\$ 626.00	\$ 394.00		-100.00%
Student Veterans Association	4	3	\$ 1,644.00	\$ 180.00	\$ 148.00	-17.78%	\$ 690.00	\$ -	\$ -		\$ 954.00	\$ 180.00	\$ 148.00	-17.78%
Super Smash Brothers Club	74	2	\$ 1,160.00	\$ 1,140.00	\$ 1,414.00	24.04%	\$ -	\$ -	\$ -		\$ 1,160.00	\$ 1,140.00	\$ 1,414.00	24.04%
Swim Club	92	3	\$ 1,885.00	\$ 1,542.00	\$ 1,760.00	14.14%	\$ 1,770.00	\$ 1,375.00	\$ 1,375.00	0.00%	\$ 115.00	\$ 167.00	\$ 385.00	130.54%
Table Tennis	22	5	\$ 2,420.00	\$ 2,394.00	\$ 1,903.00	-20.51%	\$ 2,310.00	\$ 2,280.00	\$ 1,780.00	-21.93%	\$ 110.00	\$ 114.00	\$ 123.00	7.89%
Ultimate Frisbee	58	1		\$ 6,689.00	\$13,895.00	107.73%		\$ 6,153.00	\$10,352.00	68.24%		\$ 536.00	\$ 3,543.00	561.01%
Volleyball	49	5	\$10,041.00	\$11,756.00	\$12,315.00	4.76%	\$ 8,421.00	\$10,094.00	\$11,089.00	9.86%	\$ 1,620.00	\$ 1,662.00	\$ 1,226.00	-26.23%
Water Polo	21	2	\$11,277.00	\$11,552.00	\$10,232.00	-11.43%	\$ 5,325.00	\$ 7,200.00	\$ 5,325.00	-26.04%	\$ 5,952.00	\$ 4,352.00	\$ 4,907.00	12.75%
Weight Lifting	1	1	\$ 1,472.00			0	\$ 636.00			0	\$ 836.00			0
Women's Club Basketball	14	1	\$ 3,613.00	\$ 3,393.00	\$ 5,349.00	57.65%	\$ 1,260.00	\$ 1,575.00	\$ 3,175.00	101.59%	\$ 2,353.00	\$ 1,818.00	\$ 2,174.00	19.58%
Women's Club Soccer	19	1	\$ 4,770.00	\$ 4,741.00	\$ 5,101.00	7.59%	\$ 1,920.00	\$ 1,940.00	\$ 1,990.00	2.58%	\$ 2,850.00	\$ 2,801.00	\$ 3,111.00	11.07%
Wrestling	5	0	\$28,717.00	\$28,381.00	\$29,226.00	2.98%	\$12,325.00	\$12,825.00	\$12,880.00	0.43%	\$16,392.00	\$15,556.00	\$16,346.00	5.08%
TOTALS			\$ 649,993.00	\$ 571,957.50	\$ 634,809.00		\$ 410,744.00	\$ 343,772.50	\$ 386,123.00		\$ 239,249.00	\$ 228,185.00	\$ 255,330.00	

APPENDIX G: SERVICE CLUB SUBSIDIES

Club Name	Members		Approved Expense			Approved Income			Approved Subsidy		
	UG	G	FY 2022	FY 2023	FY 2024	FY 2022	FY 2023	FY 2024	FY 2022	FY 2023	FY 2024
					FY23 to FY24 %			FY23 to FY24 %			FY23 to FY24 %
Autoshop	19	4	\$ 4,126.00	\$ 4,238.00	\$ 4,223.00	\$ 1,230.00	\$ 1,230.00	\$ 1,230.00	\$ 2,896.00	\$ 3,008.00	\$ 2,993.00
Big Brothers Big Sisters	2	1	\$ 674.00	\$ 1,630.00		\$ -	\$ -		\$ 674.00	\$ 1,630.00	
Circle K	24	5	\$ 4,711.00	\$ 4,503.00	\$ 4,965.00	\$ 1,600.00	\$ 1,470.00	\$ 1,415.00	\$ 3,111.00	\$ 3,033.00	\$ 3,550.00
Colleges Against Cancer	73	1	\$ 476.00	\$ 455.00		\$ 23.00	\$ -		\$ 453.00	\$ 455.00	
Community Service and Leadership	0	0	\$ 1,875.00	\$ 4,125.00	\$ 16,125.00	\$ -	\$ -	\$ -	\$ 1,875.00	\$ 4,125.00	\$ 16,125.00
Executive Board	26	6	\$ 15,453.00	\$ 14,651.00	\$ 13,907.00	\$ -	\$ -	\$ -	\$ 15,453.00	\$ 14,651.00	\$ 13,907.00
GM Week	6	1	\$ 52,525.00	\$ 51,256.00	\$ 48,898.00	\$ -	\$ -	\$ -	\$ 52,525.00	\$ 51,256.00	\$ 48,898.00
Habitat for Humanity	49	5	\$ 756.00	\$ 975.00	\$ 1,015.00	\$ -	\$ -	\$ -	\$ 756.00	\$ 975.00	\$ 1,015.00
Jazz Ensemble	7	6	\$ 4,482.00	\$ 3,370.00		\$ 2,824.00	\$ 840.00		\$ 1,658.00	\$ 2,530.00	
Judicial Board	5	2		\$ 530.00	\$ 338.00		\$ -	\$ -		\$ 530.00	\$ 338.00
Pep Band	97	7	\$ 18,413.00	\$ 17,938.00	\$ 18,198.00	\$ -	\$ -	\$ -	\$ 18,413.00	\$ 17,938.00	\$ 18,198.00
Percussion Ensemble	3	2	\$ 70.00	\$ -		\$ -	\$ -		\$ 70.00	\$ -	
Red Zone	51	12	\$ 15,075.00	\$ 5,175.00	\$ 15,049.00	\$ 11,825.00	\$ 725.00	\$ 7,125.00	\$ 3,250.00	\$ 4,450.00	\$ 7,924.00
Rensselyrics	20	0	\$ 1,262.00	\$ 720.00	\$ 1,096.00	\$ 1,173.00	\$ 300.00	\$ 1,051.00	\$ 89.00	\$ 420.00	\$ 45.00
RMA (Rensselaer Music Association)	170	33	\$ 63,573.00	\$ 64,732.00	\$ 58,992.00	\$ 450.00	\$ 11,290.00	\$ 4,525.00	\$ 63,123.00	\$ 53,442.00	\$ 54,467.00
RPI Ambulance	72	3	\$ -	\$ 16,154.00	\$ 24,309.00	\$ -	\$ -	\$ -	\$ -	\$ 16,154.00	\$ 24,309.00
RPI Global Medical Brigade	20	8	\$ 3,345.00	\$ 2,989.00	\$ 4,300.00	\$ 1,100.00	\$ 1,100.00	\$ 1,625.00	\$ 2,245.00	\$ 1,899.00	\$ 2,675.00
RPI Players	93	3	\$ 25,590.00	\$ 25,470.00	\$ 27,614.00	\$ 7,375.00	\$ 7,375.00	\$ 10,150.00	\$ 18,215.00	\$ 18,095.00	\$ 17,464.00
RPI TV	19	2	\$ 9,490.00	\$ 7,216.00	\$ 20,195.00	\$ 2,225.00	\$ 1,065.00	\$ 5,355.00	\$ 7,265.00	\$ 6,151.00	\$ 14,840.00
RPignite	3	1	\$ 1,365.00			\$ 150.00			\$ 1,215.00		
Sheer Idiocy	7	1	\$ 675.00	\$ 321.00	\$ 236.00	\$ 110.00	\$ 120.00	\$ -	\$ 565.00	\$ 201.00	\$ 236.00
Student Senate	22	5	\$ 11,590.00	\$ 11,862.00	\$ 8,299.00	\$ -	\$ -	\$ -	\$ 11,590.00	\$ 11,862.00	\$ 8,299.00
Symphonic Band	22	8	\$ 525.00	\$ -		\$ 52.00	\$ -		\$ 473.00	\$ -	
Terra Cafe	1	2	\$ 1,033.00	\$ -		\$ -	\$ -		\$ 1,033.00	\$ -	
The Polytechnic	30	1	\$ 2,190.00	\$ 1,432.00	\$ 3,662.00	\$ -	\$ -	\$ -	\$ 2,190.00	\$ 1,432.00	\$ 3,662.00
UPAC Cinema	13	1	\$ 47,055.00	\$ 36,109.00	\$ 46,338.00	\$ 800.00	\$ 800.00	\$ 6,450.00	\$ 46,255.00	\$ 35,309.00	\$ 39,888.00
UPAC Comedy	5	1	\$ 29,360.00	\$ 29,230.00	\$ 29,182.00	\$ 500.00	\$ 500.00	\$ 500.00	\$ 28,860.00	\$ 28,730.00	\$ 28,682.00
UPAC Concerts	8	0	\$ 120,728.00	\$ 118,205.00	\$ 131,621.00	\$ 39,500.00	\$ 39,500.00	\$ 51,000.00	\$ 81,228.00	\$ 78,705.00	\$ 80,621.00
UPAC General	16	5	\$ 16,549.00	\$ 16,333.00	\$ 18,844.00	\$ -	\$ -	\$ -	\$ 16,549.00	\$ 16,333.00	\$ 18,844.00
Union Speakers Forum	0	0	\$ 20,700.00	\$ 20,700.00	\$ 36,850.00	\$ -	\$ -	\$ -	\$ 20,700.00	\$ 20,700.00	\$ 36,850.00
W2SZ HAM Radio	27	2	\$ 2,904.00	\$ 2,822.00	\$ 2,970.00	\$ 285.00	\$ 225.00	\$ -	\$ 2,619.00	\$ 2,597.00	\$ 2,970.00
WRPI	44	0	\$ 15,800.00	\$ 15,882.00	\$ 14,726.00	\$ -	\$ -	\$ -	\$ 15,800.00	\$ 15,882.00	\$ 14,726.00
Winter Carnival	15	5	\$ 32,950.00	\$ 32,950.00	\$ 37,949.00	\$ -	\$ -	\$ -	\$ 32,950.00	\$ 32,950.00	\$ 37,949.00
TOTALS			\$ 525,320.00	\$ 511,973.00	\$ 589,901.00	\$ 71,222.00	\$ 66,540.00	\$ 90,426.00	\$ 454,098.00	\$ 445,433.00	\$ 499,475.00

APPENDIX H:

ADMINISTRATIVE SUBSIDIES

Budget	Approved Subsidy			
	FY 2022	FY 2023	FY 2024	FY23 to FY24 %
Administration Office	\$ 1,122,592.00	\$ 1,092,648.00	\$ 1,133,378.00	3.59%
Big Red Freakout	\$ 5,000.00	\$ 4,925.00	\$ 4,800.00	-2.60%
Bookstore	\$ (343,598.00)	\$ (265,156.00)	\$ (395,156.00)	32.90%
Clubhouse Pub	\$ (343,598.00)	\$ (265,156.00)	\$ (395,156.00)	32.90%
Contingency	\$ 55,000.00	\$ 55,000.00	\$ 42,500.00	-29.41%
Debt Service	\$ 258,890.00	\$ 258,890.00	\$ 258,890.00	0.00%
Facilities	\$ 268,876.00	\$ 213,171.00	\$ 215,500.00	1.08%
Father's Marketplace	\$ (179,613.00)	\$ (179,613.00)	\$ (179,613.00)	0.00%
Food Service	\$ (37,663.00)	\$ (37,663.00)	\$ (37,663.00)	0.00%
Games Room	\$ 8,660.00	\$ 8,324.00	\$ 8,000.00	-4.05%
Intramurals	\$ 5,035.00	\$ 4,815.00	\$ 8,670.00	44.46%
Legal Services	\$ 45,785.00	\$ 46,930.00	\$ 50,000.00	6.14%
Mueller Center	\$ 546,308.00	\$ 549,064.00	\$ 530,073.00	-3.58%
Multicultural & Diversity Programs and Initiatives	\$ 16,868.00	\$ 6,900.00	\$ 11,900.00	42.02%
Outdoor Programs			\$ 29,275.00	100.00%
Performing Arts	\$ 10,600.00	\$ 11,000.00	\$ 10,000.00	-10.00%
Playhouse	\$ 8,422.00	\$ 6,892.00	\$ 8,800.00	21.68%
RU Clubs and Organizations Support	\$ 46,576.00	\$ 37,345.00	\$ 43,888.00	14.91%
RU Marketing & Publicity	\$ 21,790.00	\$ 18,870.00	\$ 22,270.00	15.27%
RU Student Staff	\$ 490,613.00	\$ 508,886.00	\$ 561,734.00	9.41%
Student Activities Special Events	\$ 31,850.00	\$ 9,500.00	\$ 13,800.00	31.16%
Student Activities Summer	\$ 12,790.00	\$ 14,337.00	\$ 24,650.00	41.84%
The Arch	\$ 3,547.00			0
Travel Contingency	\$ 45,500.00	\$ 45,500.00	\$ 45,500.00	0.00%
Union Show Techs	\$ 9,720.00	\$ 9,455.00	\$ 11,850.00	20.21%
Vendors	\$ (86,752.00)	\$ (86,752.00)	\$ (97,997.00)	11.47%
Wellness Programs			\$ 31,170.00	100.00%
TOTALS	\$ 2,023,198.00	\$ 2,068,112.00	\$ 1,961,063.00	

APPENDIX I RESERVES ACCOUNT BREAKDOWN

Reserve Fund Name	Purpose	Source			Current Balance
		Student Fees	Income	Fundraising	
ACHA Club Hockey	uniform replacement	•			\$ 4,500.00
Aikido	training mats	•			\$ 220.00
RU Archer Center	Archer Center	•			\$ 58,703.31
Astrophysical Society	16" telescope maintenance; purchase of large equipment	•			\$ 2,674.26
Auto Shop	lift; tire balancer repair or replacement	•			\$ 4,032.00
BSA Cultural Center	upkeep of X Lounge; programming		•		\$ 5,146.46
Club Baseball	uniform replacement	•			\$ 2,000.00
Clubhouse Pub	large equipment purchase	•			\$ 5,818.83
Dance Club	equipment replacement	•			\$ 2,500.00
Habitat for Humanity	local build savings account for fundraising money			•	\$ 4,270.53
Mother's	lighting equipment replacement	•			\$ 750.00
RU Mueller Center	Circuit Training; major equipment purchases	•			\$ 17,313.00
Outing Club	replacement equipment	•			\$ 5,460.00
Percussion Ensemble	vibraphone purchase	•			\$ 550.00
RU Playhouse	long-term purchases; light/sound updates	•			\$ 17,736.85
Presidential Signature Events	events	•			\$ 12,495.81
Rensselaer Music Association	large equipment purchase	•			\$ 7,450.85
Rensselyrics	CD production	•	•	•	\$ 961.43
RPI Ambulance Replacement	ambulance; first response vehicle; radios; emergencies; house exp.	•			\$ 152,663.98
RPI TV	cameras; equipment repairs	•			\$ 18,291.53
RSFA (Rensselaer Science Fiction & Anime)	Genericon expenses		•		\$ 54,170.25
Sailing Club	boats; sails	•			\$ 7,820.00
Transit	camera purchase	•			\$ 21,912.74
Rensselaer Union Facilities	large project repairs; upgrades	•			\$ 368,824.41
Rensselaer Union Technology	new server upgrade for Union IT	•			\$ 32,000.00
Union Show Tech Reserves	speaker system upgrade	•			\$ 459.00
UPAC Cinema	projection equipment replacement	•			\$ 1,708.01
V Day	women's issues & domestic violence programs			•	\$ 1,481.00
Volleyball	volleyball net	•			\$ 200.00
W2SZ HAM Radio	antennae replacement or repair	•			\$ 722.57
Wrestling Team	replacement competition mats	•			\$ 7,373.11
WRPI	major equipment purchases; repairs; tower maintenance	•			\$ 49,449.15
TOTALS					\$ 869,659.08

CONTRIBUTORS & APPROVALS

Executive Board

Colleen Corrigan

133rd President of the Union

Minh Nguyen
Catherine Philipps
Abigail Golden
Heather Almeida
Syed Nabeel Amjad
Brian Anderson
Noah Bennett
Dalton Chick-Penland
Spring Fang
Jacob Fuhr
Ava Gallagher
Vicky Guo
Mitchell Healey
Jake Herman
Mauricio Ibarra-Towle
Pranjal Jain
Kassandra Le
Raven Levitt
Nick Longchamp
Evan Mahns
Riya Menon
Colette Minor
Ramesis Munoz-Valverde
Winnie Ouyang
Emryn Philogene
Sneha Ranjit
Henry Robbins
Karina Sandoval
Kriti Sharma
Sanay Tralshawala
Matthew Zapken

Student Senate

Cait Bennett

156th Grand Marshal

Alexander Patterson
Tomas Gonzalez-Zugasti
Josh Youngbar
Shankar Veludandi
Hannah Tischler
Talulah Patch
Ben Viner
Olin Ryan
Colette Fishkin
Deja Rin
Harper Chisari
Austin Jefferson
Philip Paterson
Johann Li
Zhi Cheng Guan
Nathan Nguyen
Chris Roe
Edward Piontek
Henry Hanson
Aishmam Rayshahrar Sadman Johayer
Alexander Lutsevich
Adam Tidball
Adrian Alicea Roman
Karina Sandoval
Evan Wadley
Finn Welch
Mitchell Healey
Zachary Barringer
Heather Almeida
Gabriel Jacoby-Cooper

Union Annual Report Committee

Heather Almeida (UAR Committee Chair)

Cait Bennett (Grand Marshal, ex-officio)

Colleen Corrigan (President of the Union, ex-officio)

Mauricio Ibarra-Towle

Winnie Ouyang

Advisors

Martha McElligott (Business Administrator)

Steve Allard (Director of the Mueller Center)

Cameron McLean (Director of Student Activities)

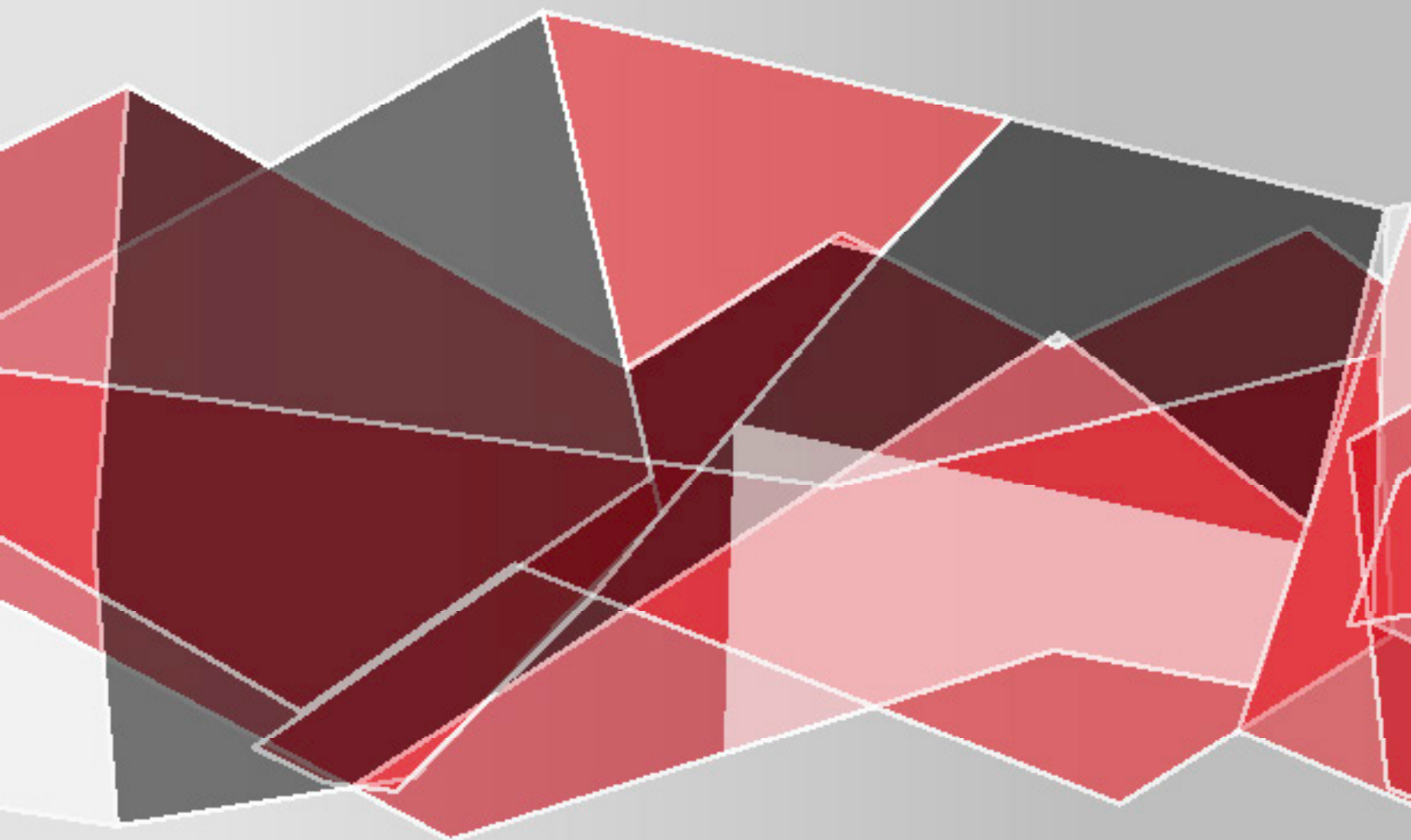
Attributions & Acknowledgments

Cover created by Kriti Sharma. Icons in Features section are created by Marcus NO, Maxim Basinski, and Vectors Market, respectively, and are used under the Creative Commons license.

Please contact the Union Annual Report Committee or the Union Executive Board at rpiunion@rpi.edu with any questions or concerns about the budgeting process, student government, the UAR, or the Activity Fee.

Please note that the Rensselaer Union budget for Fiscal Year 2024 is not official until it has been approved by the Rensselaer Polytechnic Institute Board of Trustees as of early March 2023. On December 7th, 2022, the Rensselaer Union 53rd Student Senate approved the Activity Fee recommendation (#-#-#). On December 7th, 2022, the Rensselaer Union 53rd Student Senate approved the Union Annual Report (#-#-#). Both were also approved by the Union Annual Report Committee on December 5th, 2022. The information contained in this Union Annual Report is public information to all members of the Rensselaer community.

Unless otherwise credited above, all text, graphs, and other visual elements within this document are copyrighted properties of the Rensselaer Union. Express written approval from the Rensselaer Union Administrative Office (518-276-6505) must be obtained in order to use any part of this document.



The Rensselaer Union
15th Street, Troy, New York
12180